

HEXAGON AGRICULTURE

Collect diagnostic guide



1 Collecting diagnostic on the onboard controllers



Important

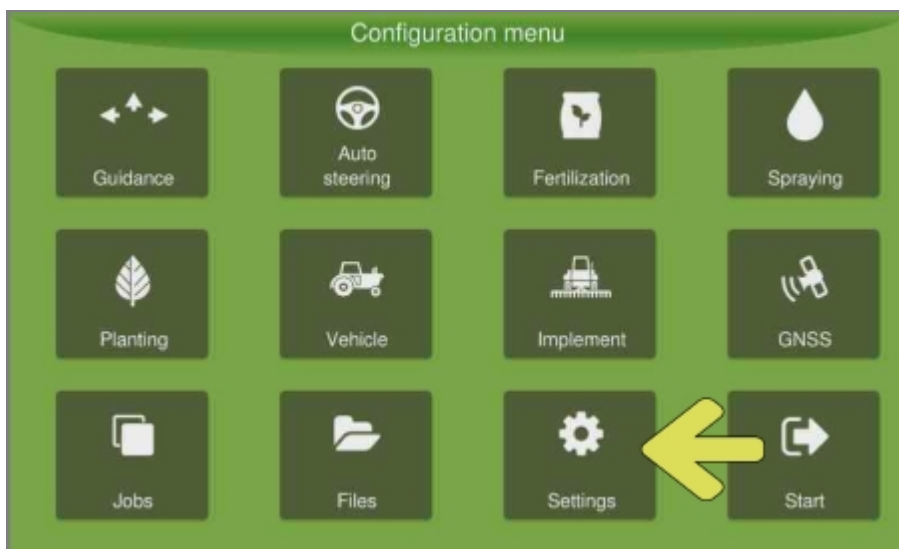
Before starting the procedure below, make sure you have at hand a USB stick to write the diagnostics.

To collect diagnostic data on the onboard controllers, proceed the following way:

1. Select the **Configuration menu** in the operation screen.



2. Select the **Settings** option.

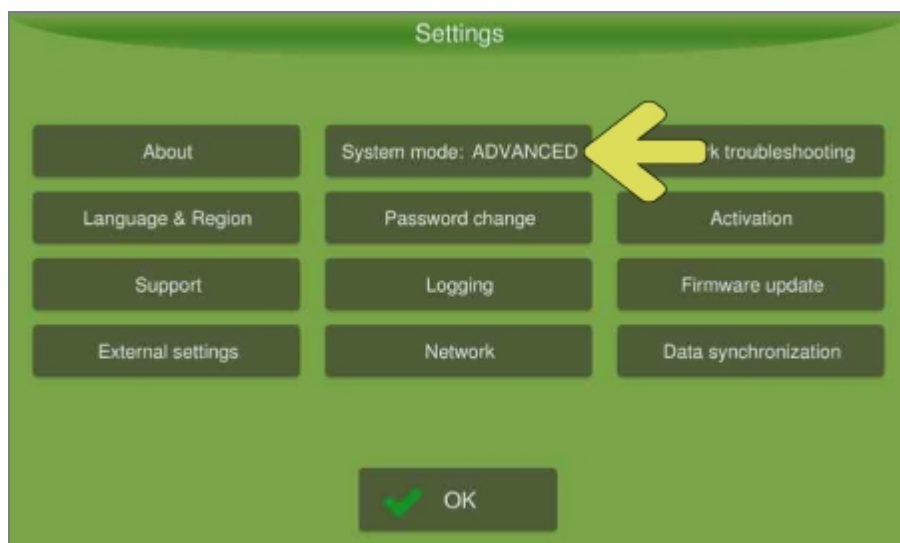


3. Change the system mode to **Advanced**.

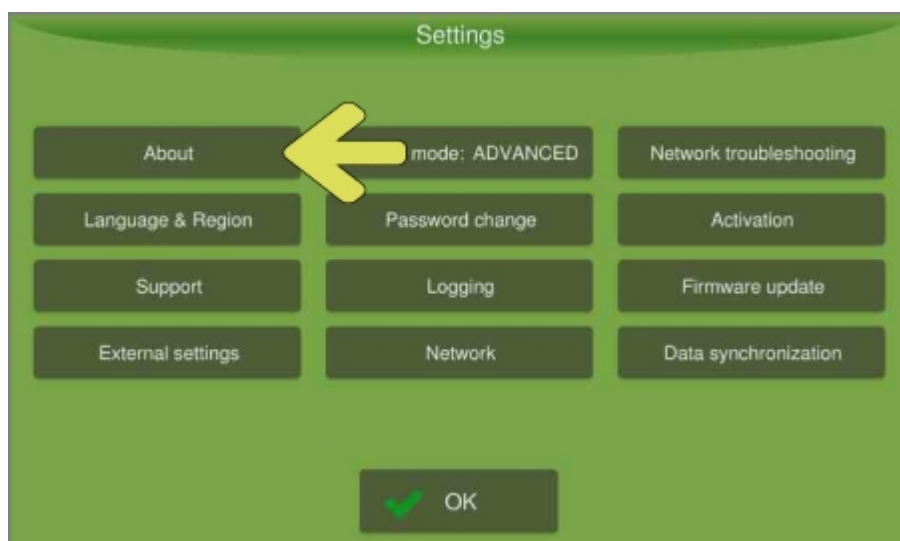


Important

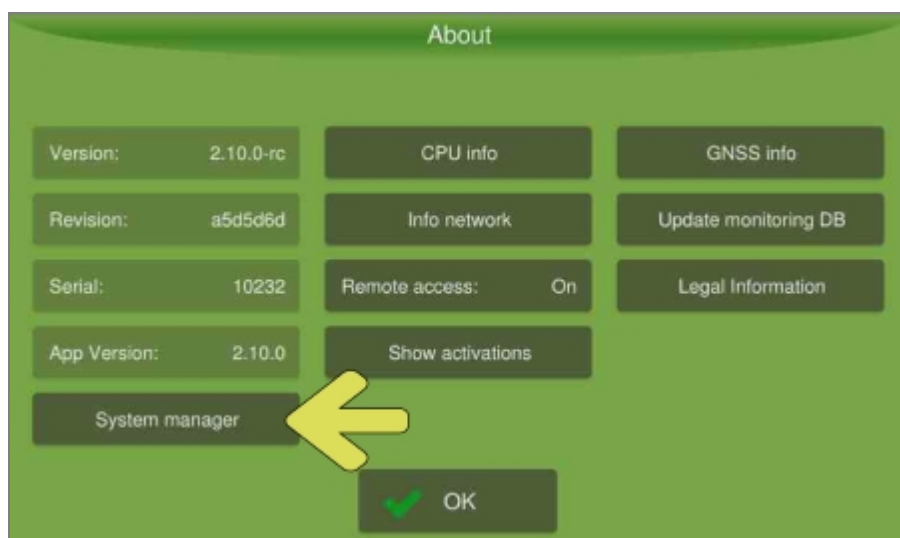
You must have a password to change the system mode. Advanced mode gives you access to more features.



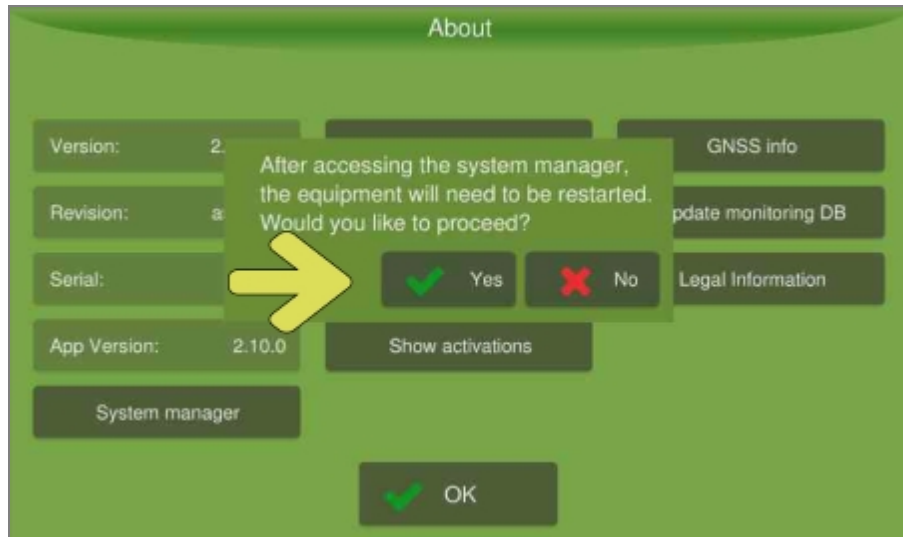
4. Select **About**.



5. Select the **System manager** option.



6. The system warns you that the equipment will need to be restarted. Press **Yes** to continue.



7. Select the **Collect diagnostics** option.

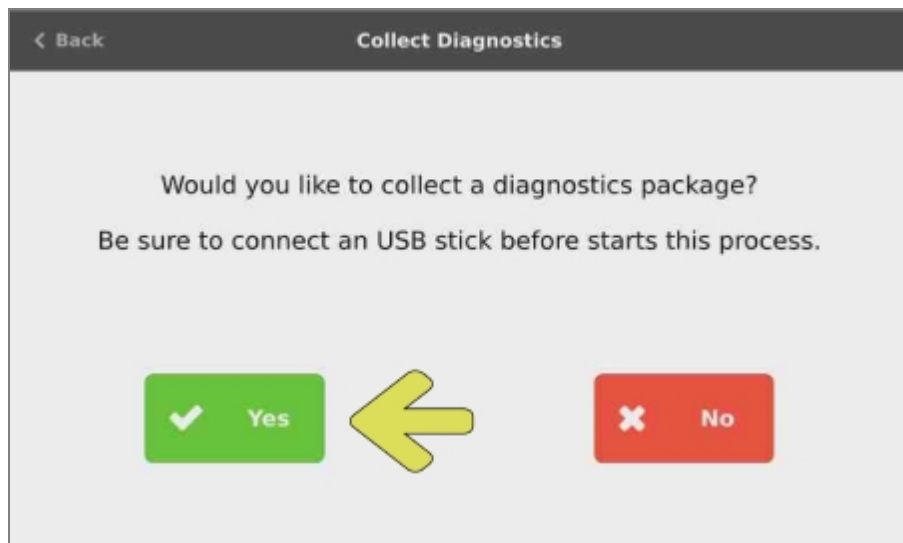


8. Select **Yes** to confirm the collection.

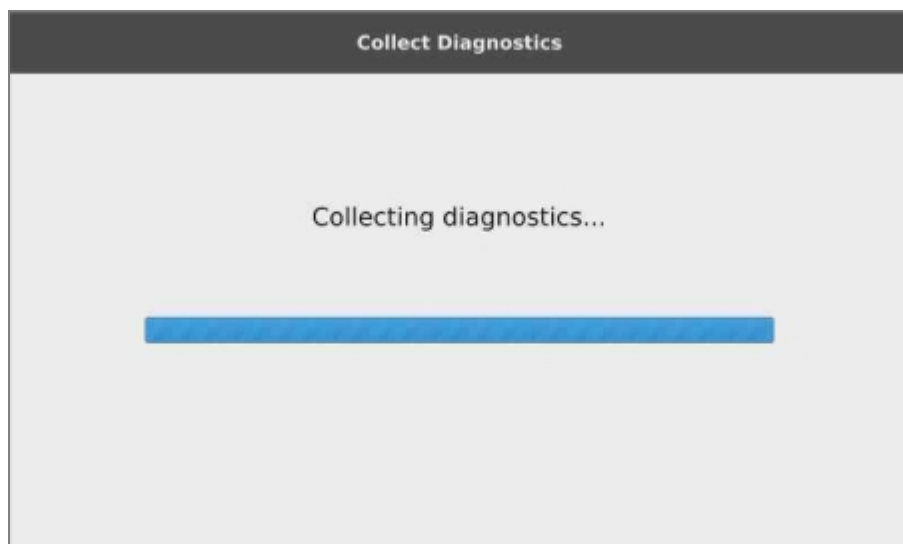


Important

To collect the diagnostics insert the USB stick in the onboard controller before confirming the operation.



9. The progress bar will be displayed.



10. Wait until the progress bar is complete.

