

# Streamlining property portfolio management

Hexagon partner IMGS allows Monaghan County Council to develop and leverage highly productive, map-based asset management workflows

With a population of more than 61,000, County Monaghan, Ireland, is known for its small hills, lakes and forests.

Like many local and central government agencies across the country, Monaghan County Council manages a wide range of land and buildings assets. However, the council relied on paper-based files and spreadsheets

to manage its property portfolio, an inefficient process that could lead to errors.

Needing a better way to understand the property across its portfolio and share asset information, Monaghan County Council decided to implement a map-based asset management system to streamline operations and improve property data accuracy and quality.





## Improving asset management

Longtime Hexagon partner IMGS implemented Asset Register, a lightweight solution based on Hexagon's M.App Enterprise. It provides a single view of Monaghan County Council's full property asset portfolio in a modern and scalable solution.

Asset Register frees up users from non-essential tasks and enables them to focus their efforts through highly productive, map-based asset management workflows. The council can easily create, edit and delete workflows to quickly meet emerging property management needs resulting from new legislation or other factors.

"Monaghan Asset Register system provides the council with the tools to effectively manage all building and land assets under the councils' control in the public interest," said Alan Hall, senior executive engineer, Monaghan County Council. "The new system allows council staff to easily access, examine and update all assets. Any updates are stored and shared in real time with other users of the system."

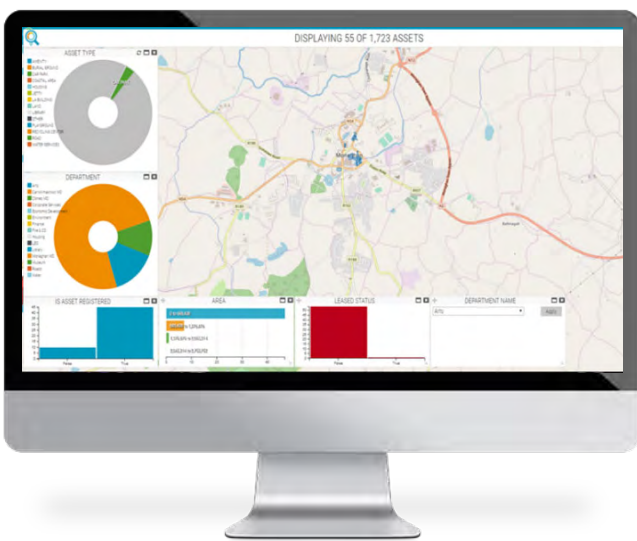
## Streamlining property portfolio management

The solution also leverages Safe Software's FME Extract, Transform and Load (ETL) capabilities, which provides a dynamic reporting engine for generating detailed reports on an individual property or on assets across the entire portfolio.

With these reports and the solution's geospatial business intelligence dashboards, the council can turn data into actionable information, allowing departments to understand the asset portfolio, interrogate the key information and aid in faster and more effective decision-making.

By enhancing overall collaboration and data sharing, Asset Register enables the council to streamline its property portfolio management efforts.

"It allows for improved governance and management of the councils' asset portfolio," Hall said.



A snapshot of Asset Register, a lightweight solution based on Hexagon's M.App Enterprise

**The new system allows council staff to easily access, examine and update all assets. Any updates are stored and shared in real time with other users of the system."**

**Alan Hall**

Senior executive engineer, Monaghan County Council

## About Hexagon

Hexagon is a global leader in digital reality solutions, combining sensor, software and autonomous technologies. We are putting data to work to boost efficiency, productivity, quality and safety across industrial, manufacturing, infrastructure, public sector, and mobility applications. Our technologies are shaping production and people-related ecosystems to become increasingly connected and autonomous – ensuring a scalable, sustainable future.

Hexagon's Safety, Infrastructure & Geospatial division improves the resilience and sustainability of the world's critical services and infrastructure. Our solutions turn complex data about people, places and assets into meaningful information and capabilities for better, faster decision-making in public safety, utilities, defense, transportation and government. Learn more at [hexagon.com](https://www.hexagon.com) and follow us [@HexagonAB](https://twitter.com/HexagonAB).

© 2022 Hexagon AB and/or its subsidiaries and affiliates. All rights reserved. Hexagon is a registered trademark. For a listing of other registered trademarks, please visit <https://www.hexagon.com/legal/trademarks>. All other trademarks or service marks used herein are property of their respective owners. 05/22