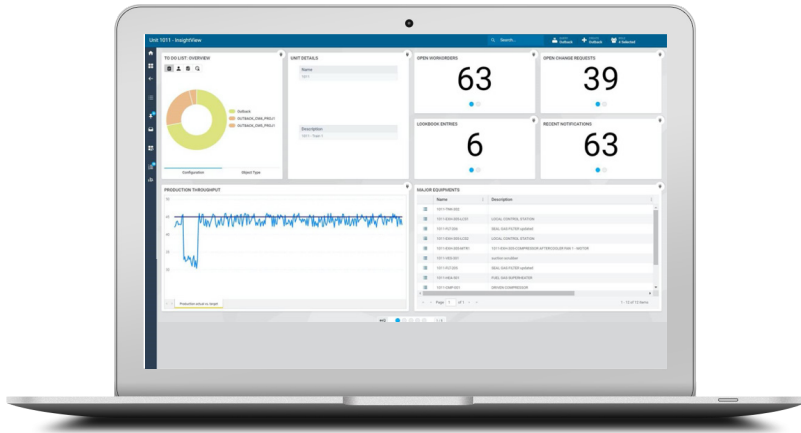


HxGN SDx[®] InsightView Dashboard



Achieve operational excellence by quickly analyzing critical industrial data at a glance with a configurable role-based dashboard!



Across the manufacturing and process industries, plant workers and executives in interconnected departments are struggling with siloed information. Making sense of vast amounts of unstructured data across numerous disconnected systems delays critical decision making. Alternatively, quick access to crucial information can help industrial enterprises reduce operational risk, increase efficiency, decrease downtime, remove value leaks and meet internal and external compliance.

Operations and maintenance staff often struggle to access and maintain increasingly large and complex amounts of unstructured data from multiple sources across different platforms. This happens when a combination of paper, spreadsheets, word processor documents, PDFs and homegrown databases are

used to manage and record critical design and operational information. This important information is often scattered across filing cabinets, disconnected computer networks and detached software applications. This data disparity makes routine tasks with associated retrieval of required information complex and time-consuming, resulting in decreased efficiency and increased downtime.

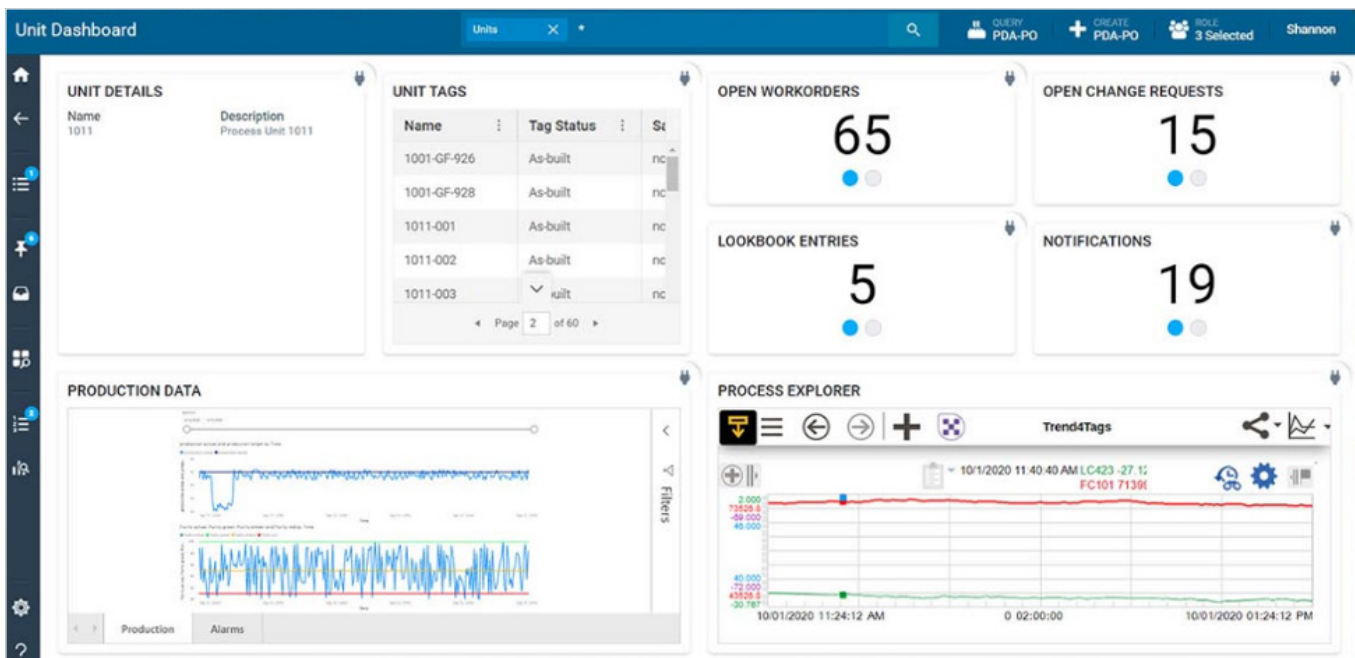
Importantly, this also means those responsible for the operation, maintenance and safety of hazardous facilities may not be fully informed during day-to-day tasks and when safety-critical events occur. Critical time is often wasted trying to find the important information related to a process unit or piece of equipment, which needs to be accessed quickly when resolving an ongoing incident. To ease these pains, companies have invested in point solutions or manual processes to manage human operations processes and procedures, maintenance work orders, real-time and historical process data, engineering schematics and technical documentation. Despite this digital step in the right direction, the core problem of siloed information is still prevalent.

For example, a plant may have industry leading software like aspenONE® or the OSIsoft™ PI System™ to monitor real-time and historical data from equipment, sensors, instruments, the DCS and SCADA systems but are still managing their engineering schematics, user manuals, technical documentation and human operations processes and procedures using other disparate tools. There are often frustrations when interfacing these related tools, resulting in plant and executive personnel still not being readily aware of safety-critical information. For example, operations personnel may not be able to quickly access engineering design data while reviewing an operations logbook entry about an out-of-specification event.



HxGN SDx InsightView Dashboard

To meet these information retrieval challenges and help achieve operational excellence, HxGN SDx InsightView allows users to quickly view essential operations, maintenance, safety, engineering and real-time data. HxGN SDx InsightView is a configurable widget-based dashboard that shows relevant user role-based information on “a single pane of glass.” Users can quickly view asset details, unit tags, open change requests, recent permits, work orders, j5 Operations Logbook entries, alarms, process data trends and live video feeds on one screen. Widgets are interactive, allowing users to make data-driven decisions, drill-down into the details of various data sources and analyze holistic information related to their role.

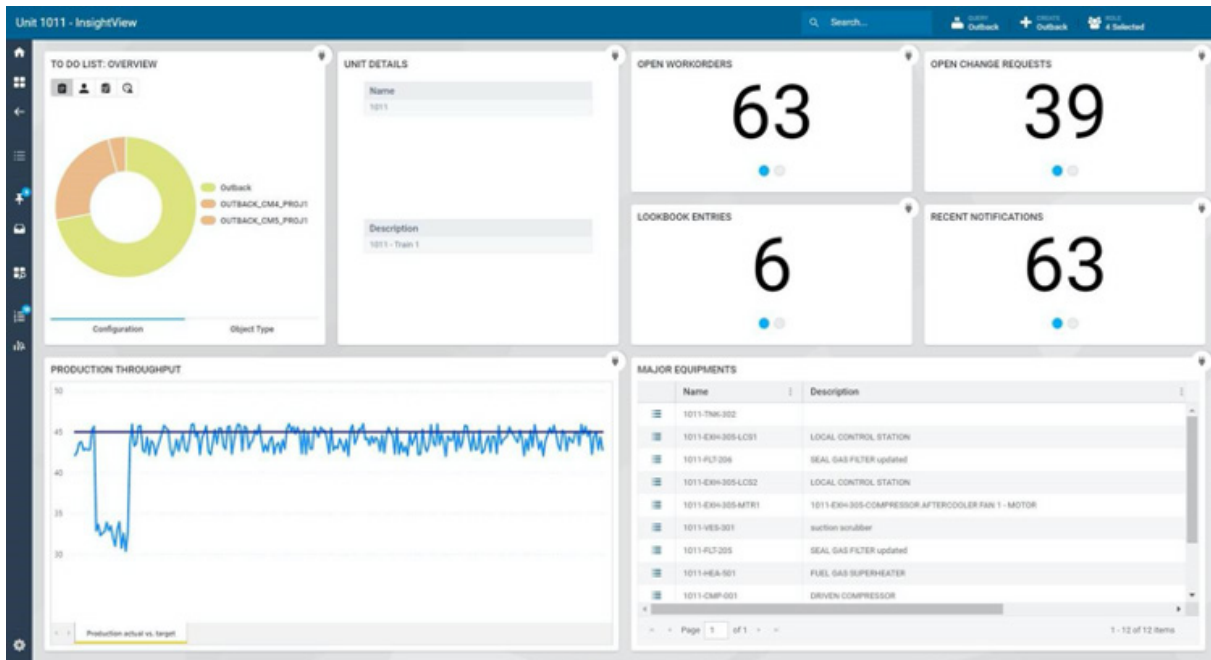


HxGN SDx InsightView makes it easy to analyze critical role-based data.

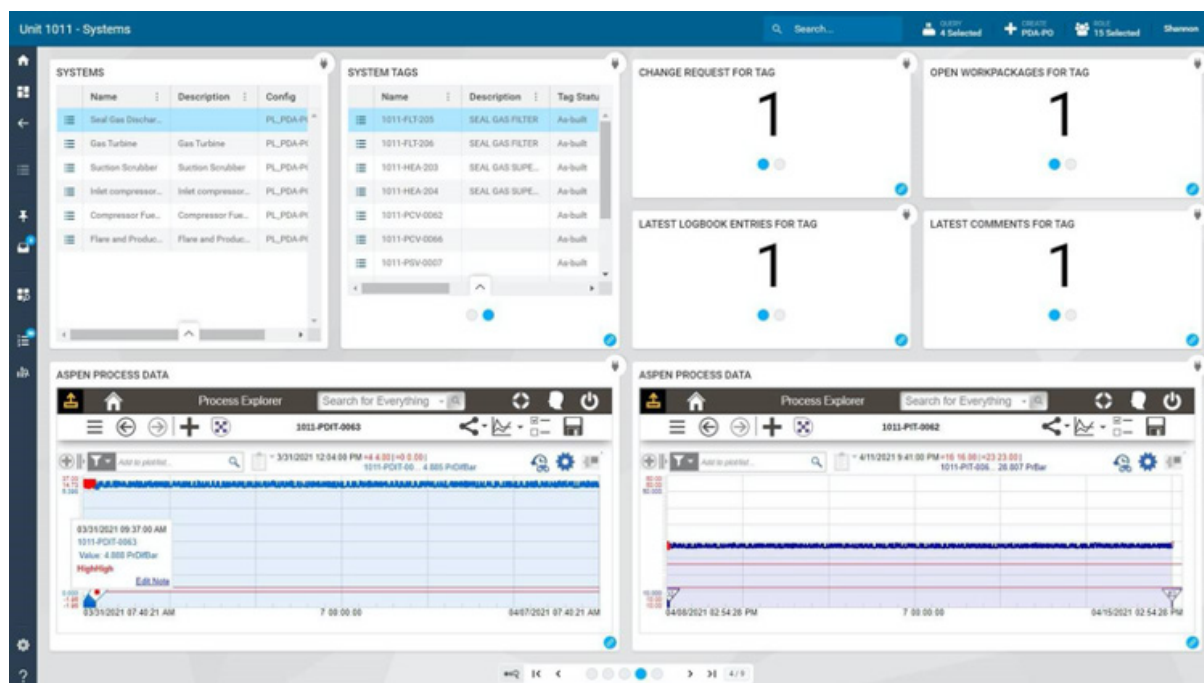
Interoperability: An Essential Element of a Digital Twin for Operations

HxGN SDx InsightView allows companies to remove data silos by powerfully combining different types of asset data into a single contextualized dashboard. Visualizing data in this context reduces the number of required user interfaces from multiple systems of record. Dashboard widgets can be related to a selected object using a step-by-step wizard – such as a tag, unit, change request, work package and others – allowing users to easily visualize plant information relevant to that object. This enables personnel to quickly find important information related to a particular process unit or piece of equipment, leading to interdepartmental clarity when investigating incidents and avoiding time wasting double work. HxGN SDx InsightView dashboards can show data from multiple industrial systems of record, such as:

- Aspen InfoPlus.21®
- aspenONE
- IBM Maximo®
- j5 Operations Management Solutions
- Microsoft® Power BI®
- PAS PlantState Integrity™
- SAP® Plant Maintenance (PM)
- The PI System



Configurable role-based widgets present only relevant information, enabling data-driven decision making. This widget for an operations technician shows a drop in production (lower left) from embedded Microsoft PowerBI data and displays the open SAP PM work orders, open change requests in HxGN SDx and recent j5 Operations Logbook entries.



Realize immediate situational awareness at a glance without having to access multiple systems with separate login credentials. Here we see current j5 Operations Logbook information about a filter featuring any reported discrepancies beside the related work order information from SAP PM and real-time data from aspenONE Process Explorer™.

About HxGN SDx

The HxGN SDx InsightView dashboard is a component of HxGN SDx, a central platform for creating a digital twin for operations – that is continually verified and kept up to date – from multiple data sources to improve asset health, reduce maintenance costs and improve overall performance at assets across a variety of industries. HxGN SDx uniquely combines human operations processes and procedures, maintenance work orders, real-time and historical process data, engineering schematics and technical documentation with 3D models and laser scans, enabling a comprehensive digital twin for operations. HxGN SDx manages common facility configuration data and documentation; through connectors, it pulls data on-demand from multiple systems of record across the IT/OT landscape (such as data historians, EAM software, PLC and SCADA systems, the CMMS and the DCS). Enabling data-driven decision making by providing personnel with comprehensive information related to their roles and tasks.



As your trusted digital transformation partner, Hexagon's operations and maintenance solutions can help you create intelligent information from both **unstructured**, duplicated and disconnected data and documentation, as well as **structured** digital data sources and databases, and **consolidate** them to help reduce operational risk, increase efficiency, decrease downtime, remove value leaks and meet internal and external compliance.

Isn't it time to accelerate your journey to operational excellence by digitally uniting your operations, maintenance, safety, engineering and real-time data?

About Hexagon

Hexagon is a global leader in sensor, software and autonomous solutions. We are putting data to work to boost efficiency, productivity, and quality across industrial, manufacturing, infrastructure, safety, and mobility applications.

Hexagon's PPM division empowers its clients to transform unstructured information into a smart digital asset to visualize, build and manage structures and facilities of all complexities, ensuring safe and efficient operation throughout the entire lifecycle.

Hexagon (Nasdaq Stockholm: HEXA B) has approximately 21,000 employees in 50 countries and net sales of approximately 3.8bn EUR. Learn more at hexagon.com and follow us @HexagonAB.