

Straight Line Diagrams

Straight Line Diagrams (SLDs) are a time-tested tool that transportation departments have long used to quickly review information about their roadways. It provides on one page an abundance of information about roadway configuration, inventory, and conditions. SLDs present side-by-side graphic representations of physical roadway characteristics, such as speed limits, bridges, number of lanes, and so forth.

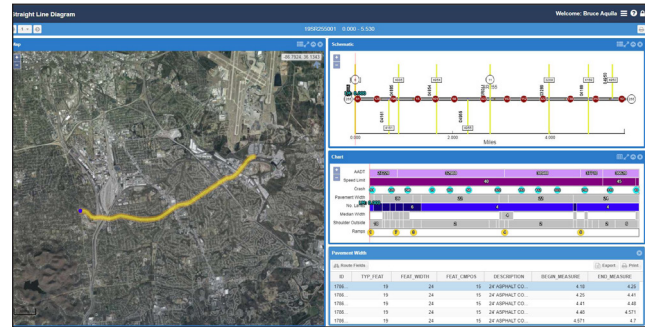
Hexagon's SLD

Most SLDs are snapshots of the roadway data – meaning the data only reflects the road characteristics at the time the SLDs were produced. Depending on the production cycle, the data represented in the SLDs could be days, weeks, or months old at the time the data is used. Furthermore, data quality and timeliness can also be adversely affected by the manual or semi-automated methods used by many organizations to create their SLDs.

Hexagon's SLD Solution lets you produce SLDs on demand. An SLD is automatically generated at the time it is requested and uses real-time data. Users have the flexibility to select which route to display, what portions of the route to display, and what data to display about them. This provides only the information you want – based on the most current data – with minimum effort. Furthermore, because this is a web-based solution, more users than ever – inside and outside of the organization – can easily access this valuable tool.

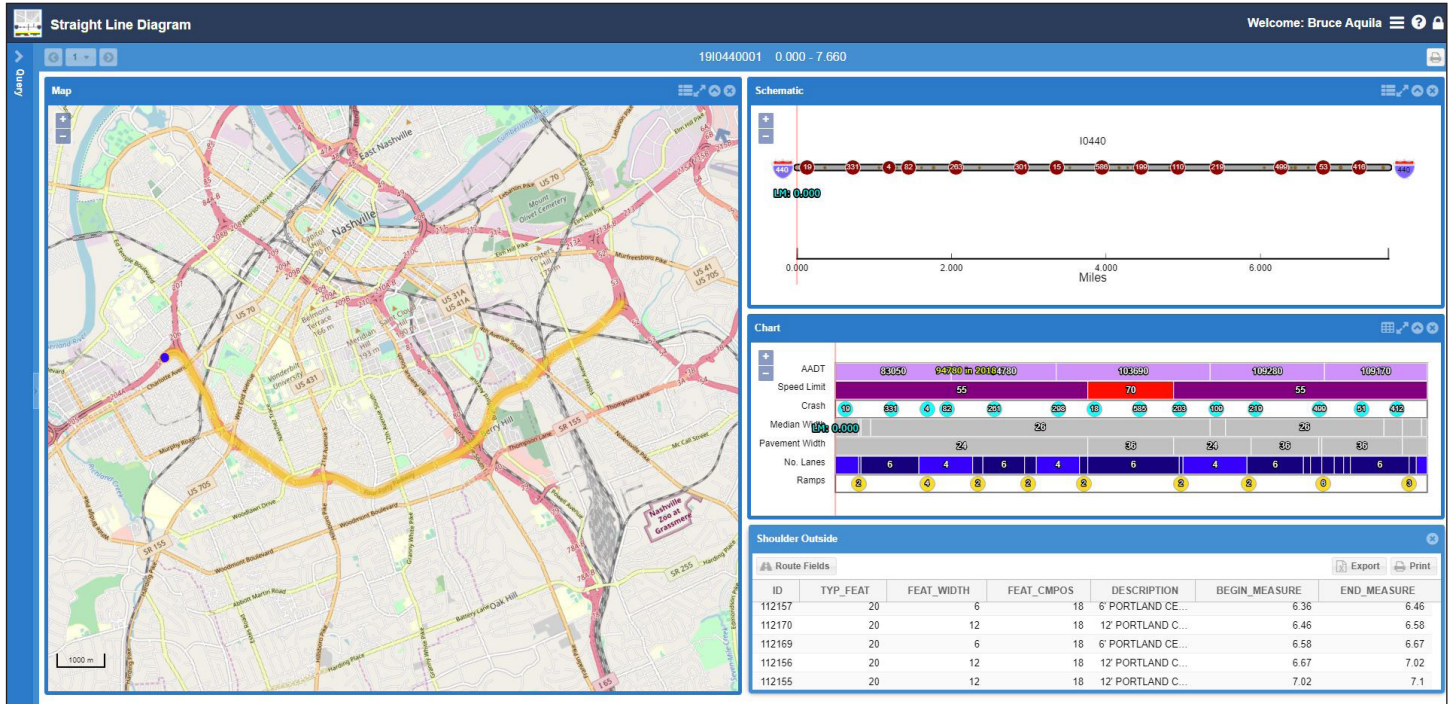
SLD Functionality

- Analyze selected locations along a roadway
- View road characteristics simultaneously and side by side
- Split out carriage-way or lane characteristics individually
- View intersection locations along roads
- Provide analysts, engineers, consultants, and others with content for an SLD map book



Hexagon's SLD Capabilities

- Custom SLD configurations
- Synchronize with Linear Referencing System (LRS)
- Configure with maps such as Google, Bing, OpenStreetMap
- Define the route and route length to analyze
- Specify sheet count or miles per sheet
- Select which road characteristics to include in the SLD
- Color code characteristics based on attribute values and ranges
- See tooltips of each road characteristic
- Pan and zoom on map, schematic, or chart panel



SLD Components

Hexagon's Solution returns the SLD in the following configurable panels:

- **Map** - Depicts a plan view of the selected portion of the route
- **Schematic** - Provides a diagram of the route and its relationship with other roadway elements
- **Chart** - Displays multiple roadway attributes together

Hexagon SLD Differentiators

- **Current** – Generated on demand using live data
- **Flexible** – Configurable per user
- **Accurate** – Automatic result generation prevents manual errors
- **Cost-saving** - Less labor intensive versus manual methods
- **Browser-based** – Wider distribution through web enablement

About Hexagon

Hexagon is a global leader in sensor, software and autonomous solutions, providing technologies that are shaping urban and production ecosystems to become increasingly connected and autonomous — ensuring a scalable, sustainable future.

Hexagon's Geospatial division creates solutions that deliver a 5D smart digital reality with insight into what was, what is, what could be, what should be, and ultimately, what will be.

Hexagon (Nasdaq OMX Stockholm: HEXA B) has approximately 20,000 employees in 50 countries and net sales of approximately 4.3bn USD. Learn more at hexagon.com and follow us @HexagonAB.