

HEXAGON'S PPM DIVISION

Defining the Next Normal for AEC

As digital disruption continues to alter how and where work gets done, it is more important than ever how and where work gets done. It is more important now than ever to make bold, strategic moves to not only survive but to thrive by adapting to the evolving business landscape.

Industry fundamentals have changed. The rules of the next normal will be defined by the companies that embrace digital transformation, invest in innovation, pivot their operating models, and outperform the competition by leveraging data to its full potential.

Hexagon's solutions exists for moments like this.



Empowering an Autonomous Future

Hexagon is a global leader in sensor, software and autonomous solutions.

- ▶ We put data to work boosting efficiency, productivity, and quality across a multitude of industries including construction, industrial, manufacturing, infrastructure, safety, and mobility.
- ▶ Our technologies are shaping the entire building ecosystems and guiding them to become increasingly connected and autonomous — ensuring a scalable, sustainable future.

Hexagon is committed to a simple, yet powerful purpose: Putting data to work to empower an autonomous future.

This bold vision paves the way for businesses, industries and humanity to thrive and grow toward a sustainable future.

Digitally Transforming How Business Gets Done

Hexagon serves the entire building ecosystem – spanning the entire building lifecycle – empowering customers to design, plan, build and operate buildings more profitably, and sustainably than at any time in history. With 50+ years of experience in delivering innovative software, Hexagon solutions transform disorganized and disparate data into intelligent, actionable information. This enables smarter design, construction, and operation of projects across the asset lifecycle.

Our solutions are changing the conditions through which business is done, in ways that transform the expectations of every stakeholder. Putting unused data to work is your industry's greatest opportunity. Realize value quickly with a comprehensive and data-driven digital twin to optimize the design, engineering, construction, operation, and maintenance of your industrial and infrastructure assets.



Design

Intelligently design and engineer industrial assets across the project enterprise



Plan

Create a solid conceptual design and enable informed investment decisions



Build

Deliver on-schedule and on-budget building and construction projects



Operate

Reduce operational risk, digitalize operations and meet internal and external regulatory compliance

Visualize, build and manage structures and facilities of all complexities, ensuring safe and efficient operations throughout the entire asset lifecycle.

Effecting Change in Disruptive Times

Hexagon is uniquely positioned to enable customers to seize this historic opportunity to define and create the next normal through digital transformation.

Your Challenges:

	Project Delays and Losses
	Declining Labor Force and Productivity
	Lost Contracts/Bids
	Disconnected Data and Processes
	Increasing Operational Risk and Cost

Construction Value Drivers:

	Safety
	Schedule
	Quality
	Cost
	Winning Business

Our Proven Outcomes:



Win More Bids
& Reduce Risk



Predict Costs
Reduce Overruns



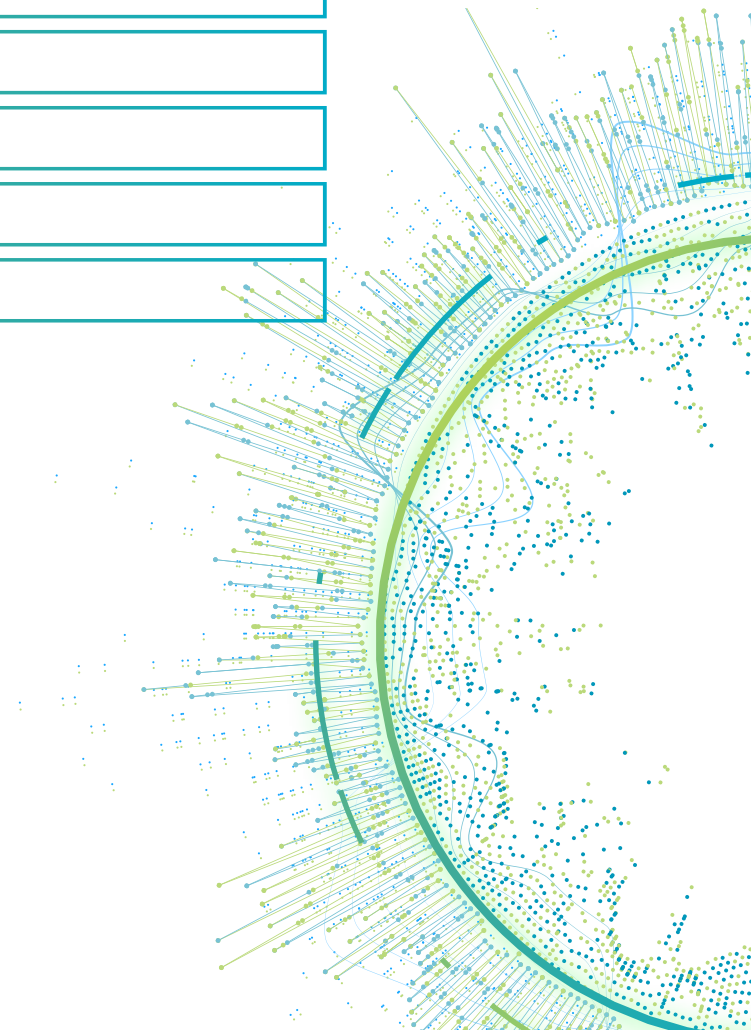
Avoid Conflicts &
Minimize Delays



Manage Change
& Avoid Rework



Increase Quality,
Safety & Efficiency



Solutions for the Complete Asset Lifecycle

In any large construction project, we see discrete roles within a connected ecosystem. From concept and design through construction, maintenance, commissioning and turnover, Hexagon enables data governance of a projects' information, connecting it across the lifecycle all the way to management of an Owner's physical asset. Our portfolio of solutions can scale across any project, offering a full suite of solutions for projects of all sizes and varying complexities.

Integrated solutions are available on-premises or on Intergraph Smart® Cloud. Work phases are:



Design

- Capture Existing Conditions
- Conceptual & Detailed Design
- Design Validation & Collaboration



Plan

- Quantity Takeoff & Estimating
- Pre-construction Planning
- Bid Management



Build

- Design-to-Field
- Machine Control
- As-Built Verification
- Visual Site Progress Monitoring
- Project Management & Controls
- Cost Management
- Completion & Turnover



Operate

- Resource Management
- Project Performance Monitoring
- Capital Project Planning
- Digital Twin for Operations

AEC Solutions | Design

Hexagon's CAD and BIM solutions offer best-in-class drawing, modeling, and editing capabilities which include iterative and generative design workflows, all built around a lightweight, file-type agnostic package.

A Better BIM with Digital Design

KEY BENEFITS

- Non-destructive S.M.A.R.T. BIM workflows
- Drawing and model views easily set up and created
- Quickly assign BIM properties to model entities
- Automatic Scheduling of BIM elements

PROVEN OUTCOMES

- ▶ “If you're an engineer who is used to working in 2D, it is much easier to start working in 3D with BricsCAD than with any other tool, because you can just follow the same intuitive pattern.”

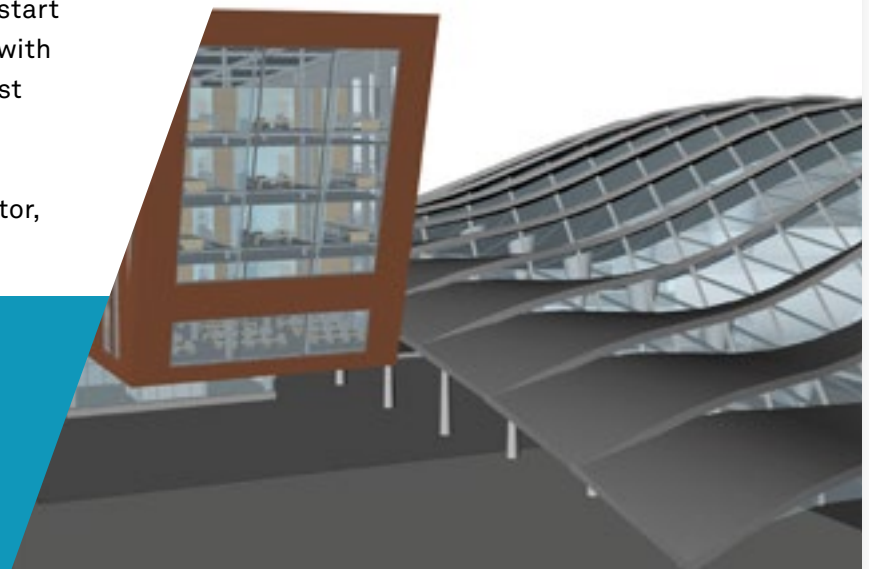
Hristo Guentchev, Managing Director,
Prototyp



OUR SMART SOLUTIONS

>> [BricsCAD® BIM](#)

>> [Bricsys® 24/7](#)



AEC Solutions | Plan

Hexagon's software empowers users to turn design and vision into a plan of action, digitally mapping out every detail for the construction phase, including time, materials, estimating, scheduling, production tracking, quality control, and cost to win more projects and reduce costs and overruns.

Integrated Project Planning

KEY BENEFITS

- Improved visualization and communications
- Increased transparency on project scope
- Identified overlapping critical work phases early
- Accurate funding schedules determined prior to construction start

PROVEN OUTCOMES

- ▶ "BricsCAD is an all-in-one package, effortlessly linking 2D, 3D, and BIM."

Peter Denie, Odisee

OUR SMART SOLUTIONS

>> [HxGN™ Smart Build Controls](#)

>> [BricsCAD BIM](#)

>> [Bricsys® 24/7](#)

>> [HxGN™ Smart Build Insight](#)



AEC Solutions | Build

With Hexagon's data-driven approach, portfolio of reality-capture sensor solutions, and intuitive software, orchestrating a construction project becomes a model of productivity and efficiency – with higher quality and less rework and waste.

Excellence in Building

KEY BENEFITS

- Integrations with P6
- Integrations with .ifc
- Non-destructive schedule, cost and model workflows
- Bi-directional information flows
- BIM to Field and Field to BIM
- Digital layout from model elements
- Point cloud integration
- Digital commissioning and inspection test plans

PROVEN OUTCOMES

- ▶ **60%** productivity increase with Issues management
- ▶ **7x** productivity increase with digital layout



OUR SMART SOLUTIONS

» [Intergraph Smart® Completions](#)

» [HxGN Smart Build Insight](#) » [HxGN Smart Build Controls](#) » [Bricsys 24/7](#)

AEC Operations | Operate

Hexagon's lifecycle approach makes certain that building owners and operators can access their Smart Digital Reality, a living digital twin that gives precise transparency on all components in the completed building to optimize operations, maintenance and useability.

Efficient Handover and Performance

KEY BENEFITS

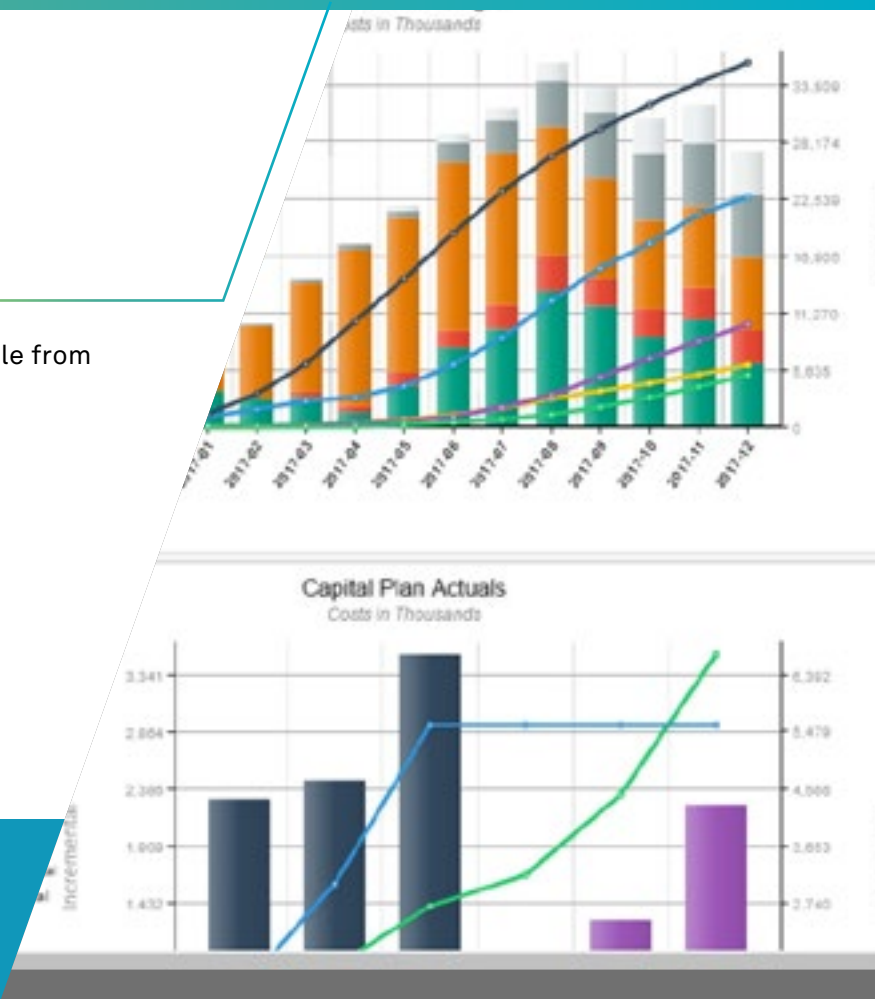
- Connect to field data to automatically gauge project performance
- Align resources with strategic objectives
- Manage long- and short-term capital investments
- Insightful metrics to easily monitor all projects in the portfolio
- Digital turnover management and work packaging

PROVEN OUTCOMES

- ▶ **50%** reduction in review cycle from linear to parallel process

OUR SMART SOLUTIONS

>> [EcoSys](#) >> [Bricsys 24/7](#) >> [Intergraph Smart Completions](#)



Data Leverage: Prepare for the Next Normal

Companies can choose to fall back on their old status quo, or they can adjust to the changing environment and reinvent themselves to seize opportunities created by digital transformation.

When data is leveraged, transformative change happens.

Hexagon solutions are empowering customers to accelerate their digital transformation to gain the competitive advantage they need to thrive in the next normal.

Digital Transformation Partners

Leading companies partner with Hexagon to achieve their digital transformation.

Hexagon AEC solutions are used by companies across the world such as Skanska, etc.





About Hexagon

Hexagon is a global leader in sensor, software and autonomous solutions. We are putting data to work to boost efficiency, productivity and quality across industrial, manufacturing, infrastructure, safety and mobility applications.

Learn more at hexagonppm.com

Follow us at [@HexagonPPM](https://twitter.com/HexagonPPM)

Contact us [here](#)