

HxGN Content Program

Metro HD City Data



High-definition digital twins of your urban landscape

The HxGN Content Program has a proven track record of providing high-quality aerial data on a countrywide scale with an extensive library of imagery and elevation data. The Content Program has expanded its offering to include ultra-high-resolution 2D and 3D digital twins of major cities through its Metro HD city program.

Hexagon is the only aerial data provider to capture both aerial imagery and LiDAR data simultaneously. This ensures temporally consistent and highly accurate data sets, so you can make confident, data-driven decisions.



Consistency at every point

We own the entire workflow, from developing and manufacturing the imaging sensor to the data acquisition and production processes, ensuring consistency throughout.



Unlock the power of deeper insights

Each data set is built using the highest quality aerial imagery and LiDAR data by our in-house team of mapping specialists. Our data is ideal for feature extraction and training machine learning algorithms.



Readily available with flexible use terms

Access data on demand, and leverage flexible data use terms that enable you to create derived products.

Data Specifications

Aerial imagery resolution

- 5 cm nadir and oblique

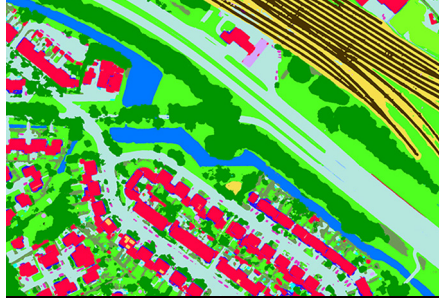
LiDAR point density

- 20 points/m²

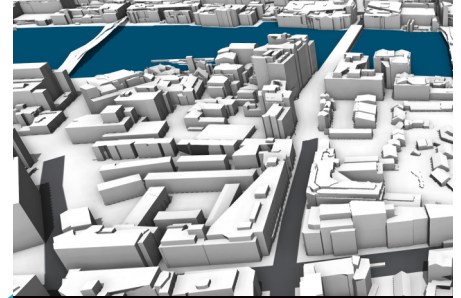
Leverage a full data stack to address your project needs.



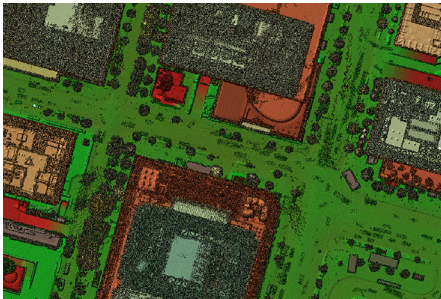
Mesh Model



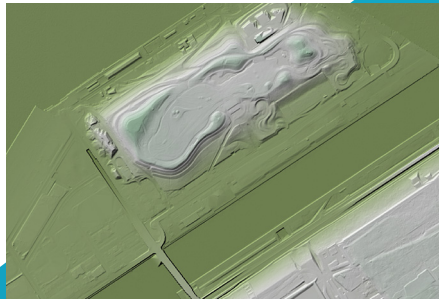
Land Cover Map



Building Model



Digital Surface Model



Digital Elevation Model



LiDAR Point Cloud



Oblique Imagery



True Orthophoto



Standard Orthophoto



Tree Model

Let's Connect

Find out which cities are available today or have your city captured by contacting us at hxgncontent.com/contact-us.