


HEXAGON'S PPM DIVISION

Defining the Next Normal



As digital disruption continues to alter how and where work gets done, it is more important than ever to make bold, strategic moves to not only survive but to sustainably thrive by changing the rules of the game.

Industry fundamentals have changed. The rules of the next normal will be defined by the companies that embrace digital transformation — those who invest in innovation, pivot their operating models and outperform the competition by leveraging data to its full potential.

Hexagon's PPM division exists for moments like this.

Empowering an Autonomous Future

Hexagon is a global leader in sensor, software and autonomous solutions.

- ▶ We put data to work to boost efficiency, productivity and quality across industrial, manufacturing, infrastructure, safety and mobility applications.
- ▶ Our technologies are shaping urban and production ecosystems to become increasingly connected and autonomous — ensuring a scalable, sustainable future.

Hexagon is committed to a simple, yet powerful purpose: Putting data to work to empower an autonomous future.

Hexagon has a bold vision where business, industry and humanity sustainably thrive.



Digitally Transforming How Business Gets Done

Hexagon's PPM division is the leading global provider of enterprise engineering software, enabling smarter design and operation of plants, ships and offshore facilities. With 50+ years of experience in delivering innovative industrial software, Hexagon solutions transform unorganized data into intelligent, actionable information that enables smarter design, construction and operation of industrial projects across the asset lifecycle.

Our solutions are **changing the conditions under which business is done**, in ways that transform the expectations for every stakeholder.

Putting unused data to work is your industry's greatest opportunity. **In 2013, SINTEF — one of Europe's largest research organizations — reported that 90% of the world's data had been generated over the last two years.** In 2014, International Data Corporation (IDC) predicted that the digital universe would grow by a factor of 10, from 4.4 ZB in 2013 to 44 ZB in 2020; in 2018 IDC also predicted this would rise to an incredible 175 ZB by 2025! It's time to utilize your data and quickly benefit from the value of a comprehensive digital twin to optimize the design, engineering, construction, operation and maintenance of your industrial assets.



Plan

Create a solid conceptual design and enable informed investment decisions



Design

Intelligently design and engineer industrial assets across the project enterprise



Build

Deliver on-schedule and on-budget building and construction projects



Operate

Reduce operational risk, digitalize operations and meet internal and external regulatory compliance



Maintain

Reduce costly downtime and increase asset efficiency and reliability

Visualize, build and manage structures and facilities of all complexities, ensuring safe and efficient operations throughout the entire asset lifecycle.

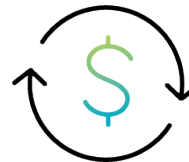
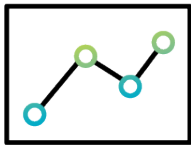
Effecting Change in Disruptive Times

Hexagon is uniquely positioned to enable customers to seize this historic opportunity to define and create the next normal through digital transformation.

Your Challenges:

	Project Delays and Losses
	Declining Productivity
	Lost Contracts/Bids
	Disconnected Data and Processes
	Increasing Operational Risk and Cost

Our Proven Outcomes:



20-30%

Increased
Productivity

15-25%

Schedule
Compression

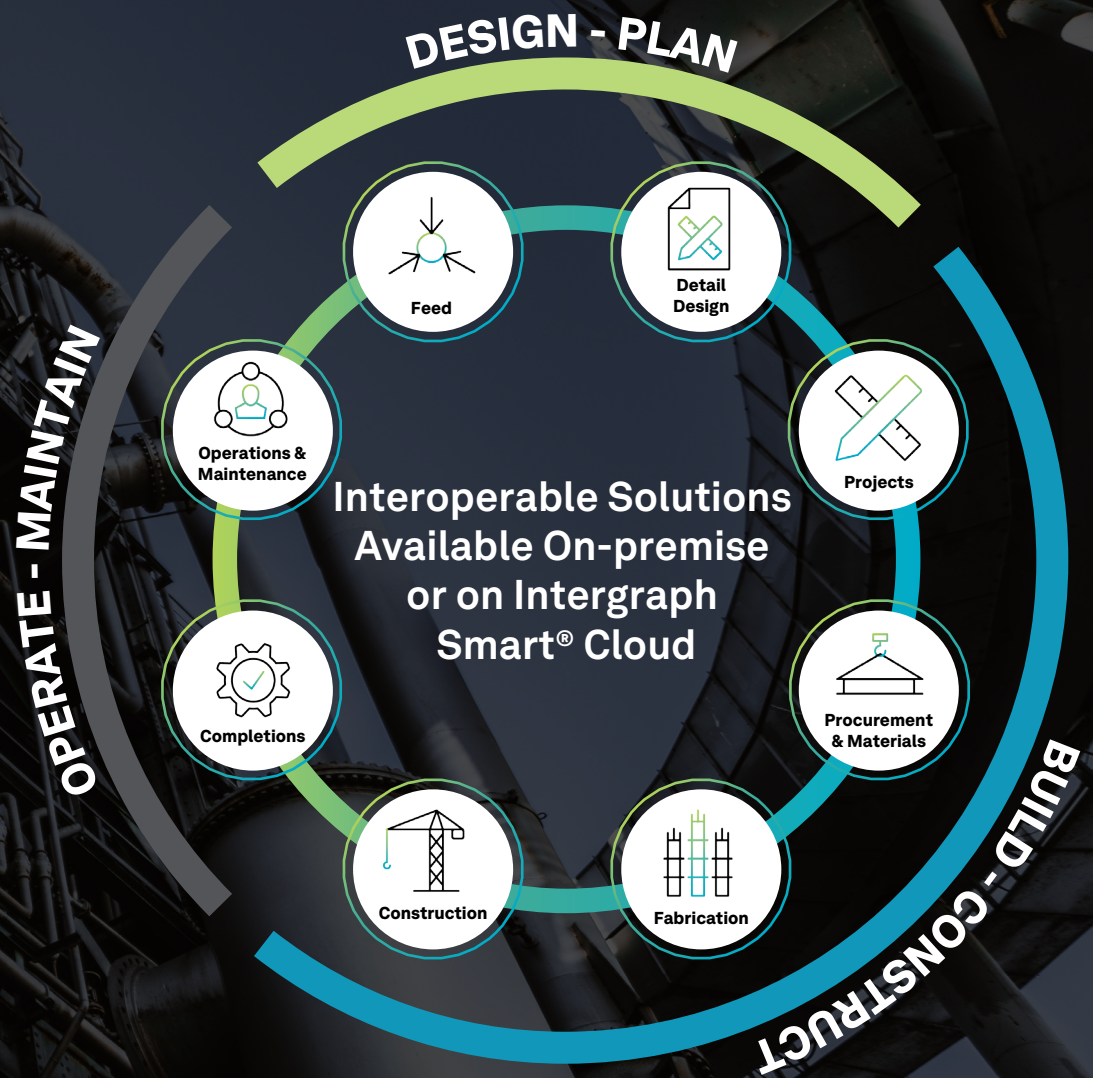
10-15%

CapEx
Savings



Solutions for the Complete Asset Lifecycle

In any large engineering project, we see discrete roles within a connected ecosystem. From concept and design through to plant operations, maintenance and decommissioning. Hexagon enables data governance of a plant's engineering information, connecting it across the physical asset, through to process and regulatory requirements. Our technology portfolio can scale across any project, offering a full suite of solutions for projects of all sizes and varying complexities.



Data Leverage: Prepare for the Next Normal

Companies can choose to fall back on their old status quo, or they can adjust to the changing environment and reinvent themselves to seize the opportunities created by digital transformation.

When data is leveraged, transformative change happens.

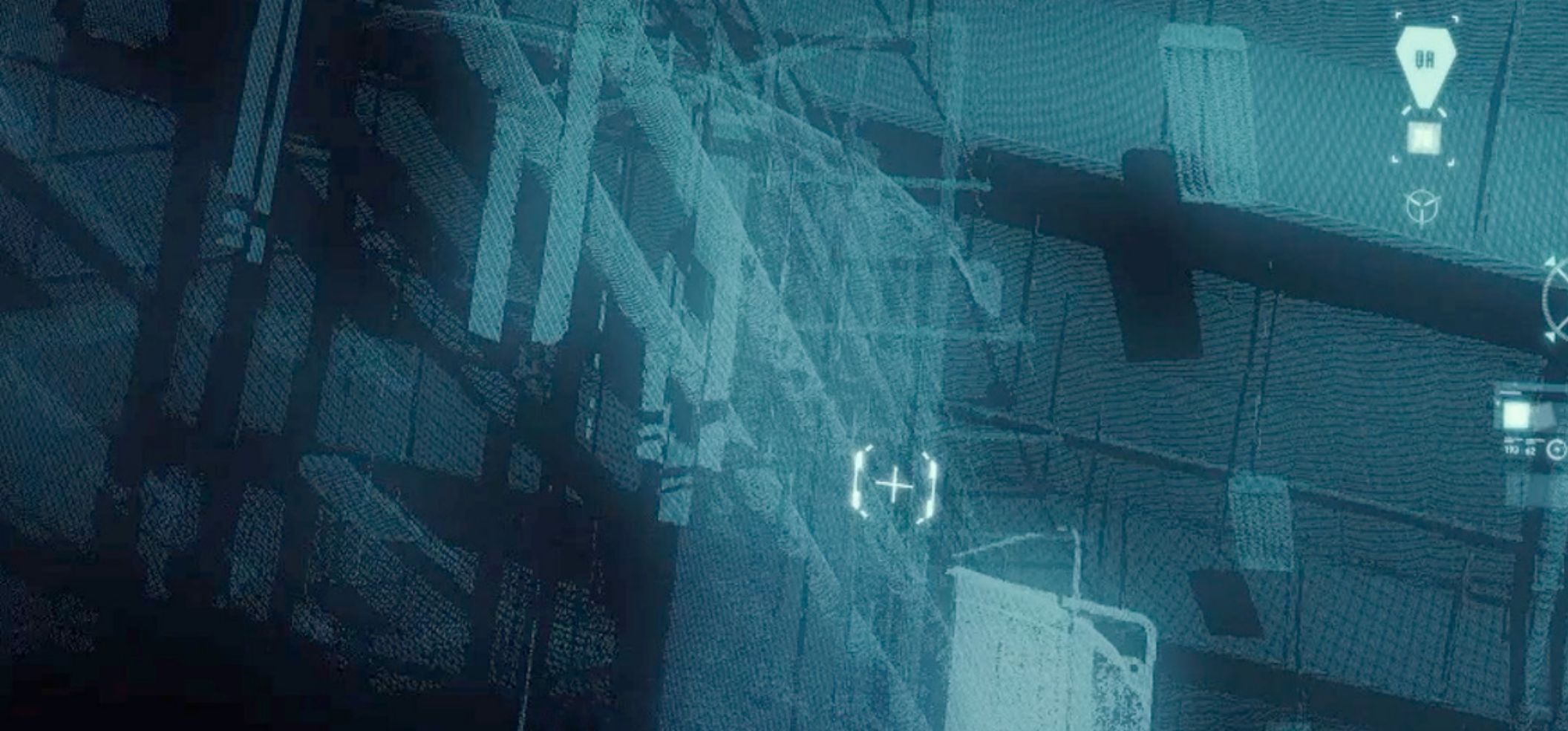
Hexagon solutions are empowering customers to accelerate their digital transformation and gain the competitive advantage they need to thrive in the next normal.

Digital Transformation Partners

Leading companies partner with Hexagon to achieve their digital transformation.

Hexagon's solutions are used by companies across the world such as:

AGL Energy	City of London	DSM	INPEX	Showa Denko
Air Products	Wastewater Treatment	EDF Energy	Jacobs	SLNG
American Electric Power	CDM Smith	ENEOS	Los Angeles Metro	TechnipFMC
AW North Carolina	Chiyoda Corporation	ESRF	Marathon Petroleum	Tetra Pak
Ball Aerospace	CNRL	Fusion for Energy	Petrofac	Thames Water
Bechtel	Contact Energy	Georgia Pacific	Saipem S.P.A.	Worley
Burns & McDonnell	Deepwater Subsea	Harvard University	Salt River Project	
Calpine	Dow	Infineum	Saudi Aramco	



About Hexagon

Hexagon is a global leader in sensor, software and autonomous solutions. We are putting data to work to boost efficiency, productivity and quality across industrial, manufacturing, infrastructure, safety and mobility applications.

Learn more at hexagonppm.com

Follow us at [@HexagonPPM](https://twitter.com/HexagonPPM)

Contact us [here](#)