

GeoMedia Mapping Manager

High-Quality Cartographic Map Production

GeoMedia® Mapping Manager combines **GeoMedia® Map Publisher** and **GeoMedia® Feature Cartographer** to offer enhanced cartographic capabilities for constructing and producing series map products.

Mapping Manager provides tools for local, regional, national, and multinational agencies to meet the demands of hard copy map production for transportation, defense, intelligence, security, and emergency response.

GeoMedia Map Publisher is a cartographic publishing tool that provides enhanced cartographic capabilities and high levels of automation for production of map series products and ad hoc hard copy maps. You can simplify your workflow, improve map quality, and increase productivity. GeoMedia Map Publisher manages cartographic data separately from the source data, which is important in enterprise environments where other departments own the source and the cartographic group has read-only access. There is no need to copy and manage multiple versions of the source data for map production. Instead, the source data are linked with the cartographic data so that when changes are made to the source data, GeoMedia Map Publisher automatically determines which cartographic data changes are needed to publish new editions of the mapping products, creating a much simpler, more streamlined revision workflow. Multiple users can work simultaneously on individual mapping products or within a cartographic database. You can also review and retrieve edits from other users.

GeoMedia Feature Cartographer includes pre-defined information for producing a number of standardized map products to enable a process that is quick and efficient, and yields high-quality results. This customized approach to hard copy production streamlines your workflow by minimizing steps, driving down labor costs, and automating many of the tasks required to produce final map products. Included are a complete set of rules based on stringent industry specifications for the production of Topographic Line Maps (TLM), Joint Operations Graphic - Aeronautical (JOG-A), and Multinational Geospatial Co-production Program (MGCP) Derived Graphics (MDG) maps.

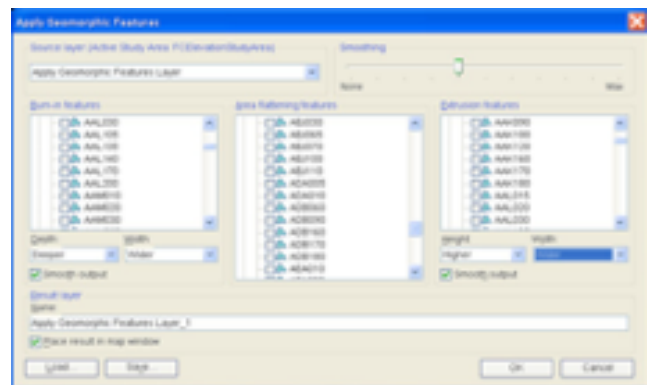
Key Features

Elevation Artifact Processing

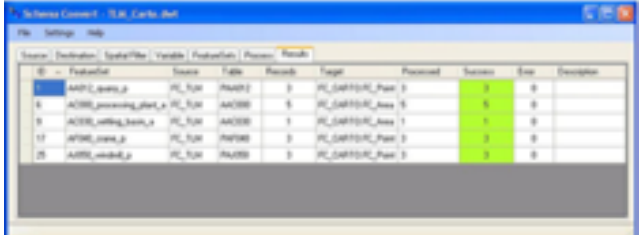
GeoMedia Feature Cartographer reduces the number of steps required to implement a craft-based technique to achieve high-quality contours. Optimized tools for hill shading, tint band, and spot height generation and a tool to calculate the minimum and maximum elevation for a selected map footprint are also available.

Cartographic Processing

GeoMedia Feature Cartographer processes the source schema and assigns the appropriate map symbology using a highly automated process driven by preset information.



Apply Geomorphic Features prepares the digital elevation model for cartographic-quality contour generation.



ID	FeatureSet	Destination	Operation	Variable	FeatureSet	Process	Target	Predefined	Success	Size	Examples
1	AHL100	HL_Fun	HL_Fun	AHL100	HL_Cartographic_Plane 2						
2	AHL101	HL_Fun	HL_Fun	AHL101	HL_Cartographic_Plane 2						
3	AHL102	HL_Fun	HL_Fun	AHL102	HL_Cartographic_Plane 2						
4	AHL103	HL_Fun	HL_Fun	AHL103	HL_Cartographic_Plane 2						
5	AHL104	HL_Fun	HL_Fun	AHL104	HL_Cartographic_Plane 2						
6	AHL105	HL_Fun	HL_Fun	AHL105	HL_Cartographic_Plane 2						
7	AHL106	HL_Fun	HL_Fun	AHL106	HL_Cartographic_Plane 2						
8	AHL107	HL_Fun	HL_Fun	AHL107	HL_Cartographic_Plane 2						
9	AHL108	HL_Fun	HL_Fun	AHL108	HL_Cartographic_Plane 2						
10	AHL109	HL_Fun	HL_Fun	AHL109	HL_Cartographic_Plane 2						
11	AHL110	HL_Fun	HL_Fun	AHL110	HL_Cartographic_Plane 2						
12	AHL111	HL_Fun	HL_Fun	AHL111	HL_Cartographic_Plane 2						
13	AHL112	HL_Fun	HL_Fun	AHL112	HL_Cartographic_Plane 2						
14	AHL113	HL_Fun	HL_Fun	AHL113	HL_Cartographic_Plane 2						
15	AHL114	HL_Fun	HL_Fun	AHL114	HL_Cartographic_Plane 2						
16	AHL115	HL_Fun	HL_Fun	AHL115	HL_Cartographic_Plane 2						
17	AHL116	HL_Fun	HL_Fun	AHL116	HL_Cartographic_Plane 2						
18	AHL117	HL_Fun	HL_Fun	AHL117	HL_Cartographic_Plane 2						
19	AHL118	HL_Fun	HL_Fun	AHL118	HL_Cartographic_Plane 2						
20	AHL119	HL_Fun	HL_Fun	AHL119	HL_Cartographic_Plane 2						
21	AHL120	HL_Fun	HL_Fun	AHL120	HL_Cartographic_Plane 2						

GeoMedia Feature Cartographer initiates GeoMedia Data Integration and Validation processes to convert the source data and add the proper attribution for the selected hard copy product's finishing.

Conflict Detection and Resolution

GeoMedia Map Publisher detects feature overprints or feature styles within a user-specified tolerance and resolves the conflicts automatically, allowing you to:

- Perform displacing automatically (valid for point features only)
- Orient conflicting points to related linear features
- Suppress the style display on less significant features or segments of features

Instance-Based Cartographic Edits

GeoMedia Map Publisher lets you perform geometry edits, such as linear displacement, and maintain those edits in a cartographic database. Feature-style editing is enabled for:

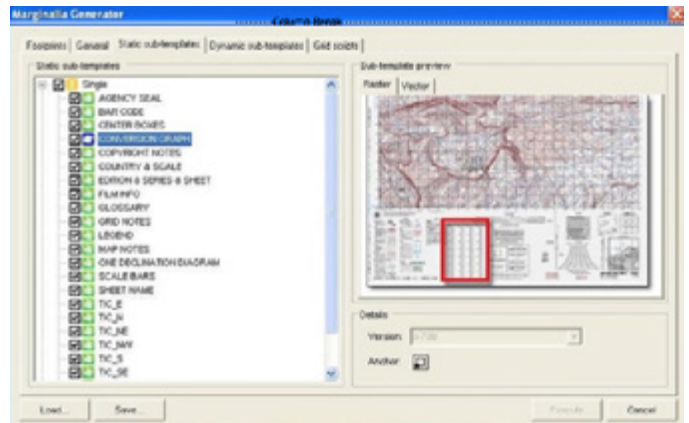
- Editing individual line-pattern components where overprints may exist
- Editing components of point symbols
- Adjusting the size, spacing, or offsets of dash-gap sequences in line styles to achieve cartographic intersections
- Adjusting area patterns on individual features
- Overriding style parameters for individual feature instances without affecting feature instances of the same class



With GeoMedia Map Publisher, you can perform cartographic editing on individual features.

Automated Map Sheet Generation

Based on the selected specification, map size, and other user-defined criteria, GeoMedia Feature Cartographer automatically generates a complete map sheet and populates it with sheet-specific information. It also generates adjoining sheet diagrams, along with cartographic grids and graticules, and adds an Elevation Guide Box (EGB) for TLM specifications or Maximum Elevation Figure (MEF) for JOG-A specifications.



The Marginalia Generator in GeoMedia Feature Cartographer automatically generates the required marginalia for the Map Sheet based on the selected specification, operator settings, and map size.

Generalization

GeoMedia Map Publisher aggregates buildings into city outlines using streets and major roads as constraints for the aggregation process. It stores generalization results as cartographic edits, separately from the originating source, and calculates the attributes of the resulting generalized features. The calculated attributes are then stored in the cartographic edits database separately from the source feature attributes. There are also interactive commands for area aggregation and boundary extension.



GeoMedia Map Publisher allows you to create smaller-scale mapping products from large-scale source.

Cartographic Database

GeoMedia Mapping Manager:

- Maintains feature and style edits made for the purposes of cartographic presentation in a separate database from cartographic source (source data or digital landscape model)
- Links cartographic edits back to their cartographic source feature in support of map product revision workflows
- Displays cartographic source data in context of cartographic edits for quality control and assurance

Key Benefits

- Create high-volume, optimized processes for production of hard copy maps to specification
- Increase productivity by reducing the number of steps in the map production process
- Accelerate many of the process steps, which reduces labor costs
- Automate schema conversion and symbology assignment
- Implement an optimized, craft-based technique to achieve high-quality contours
- Automatically generate all required map sheet information for supported maps
- Support process color separation (CMYK) or special printing colors (SPC) for hard copy output
- Generate geospatial PDF files for digital distribution
- Includes support for these products:
 - Topographic Line Map (TLM) – 1:50,000 scale
 - Joint Operations Graphic - Aeronautical (JOG-A) – 1:250,000 scale
 - MGCP Derived Graphics (MDG) – 1:50,000 scale
 - Can be customized to support additional specification-based hard copy map products
- Provides the cartographic tools you need to produce mapping products without compromising map specifications or quality
- Allows you to create smaller-scale mapping products from large-scale sources with generalization functionality for aggregating areas and extending area boundaries
- Reduces the number of manual adjustments needed with automated processing, which in turn, reduces the amount of time required to produce mapping products and make them available
- Simplifies map production revision workflows by enabling the maintenance of cartographic edits in a separate database from cartographic source data; allows you to easily identify source features that have been added, deleted, or modified – so you can provide new editions of map products with minimal effort
- Allows you to perform cartographic editing on individual features within the GeoMedia® environment, using workflows familiar to cartographers
- Reduces manual editing, shortening overall map production time with automated conflict detection, resolution strategies, and queues that bring attention to conflict areas
- Enables you to link cartographic databases back to cartographic source data for map product revision workflows

About Hexagon

Hexagon is a global leader in sensor, software and autonomous solutions. We are putting data to work to boost efficiency, productivity, and quality across industrial, manufacturing, infrastructure, safety, and mobility applications.

Our technologies are shaping urban and production ecosystems to become increasingly connected and autonomous — ensuring a scalable, sustainable future.

Hexagon's Geospatial division creates solutions that deliver a 5D smart digital reality with insight into what was, what is, what could be, what should be, and ultimately, what will be.

Hexagon (Nasdaq Stockholm: HEXA B) has approximately 20,000 employees in 50 countries and net sales of approximately 4.3bn USD. Learn more at [hexagon.com](https://www.hexagon.com) and follow us @HexagonAB.

© 2019 Hexagon AB and/or its subsidiaries and affiliates. All rights reserved. Hexagon and the Hexagon logo are registered trademarks of Hexagon AB or its subsidiaries. All other trademarks or service marks used herein are property of their respective owners.