



# Corporate Presentation

February 2025

# Hexagon in brief



## INNOVATION at scale

15% of revenues for R&D  
6,500+ R&D employees  
5,500+ active patents  
Complementary emerging tech  
through acquisitions  
(170+ in 20+ yrs)



## RELEVANCY that is vital

"Serving the world's most vital  
industries; transforming  
manufacturing, infrastructure,  
construction, city services  
and more.  
Solutions that drive fewer inputs,  
less waste and less pollution from  
efficiency, productivity, quality and  
safety gains



## STABILITY that is proven

€500mn (2000) to €5.4bn (2023)  
Approximately 24,500 employees  
across 50 countries



## SUSTAINABILITY integral to our strategy

Committed to driving profitable  
business value that ensures  
economic growth, but not at the  
expense of the planet or people

# Our impact on the world



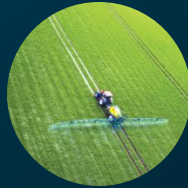
**350,000**

construction sites



**80,000**

types of mining equipment



**3.5 million**

agriculture vehicles



**90%**

of all airplanes



**95%**

of all commercial vehicles



**75%**

of all smartphones



Helps protect  
over

**1B**

people



Has captured a total of

**52M<sub>km<sup>2</sup></sub>**

of 2D aerial imagery and

**800K<sub>km<sup>2</sup></sub>**

of 3D mapping of the world

From microns to Mars, we  
measure what matters most for  
the future.



Helped support  
the landing of the  
**Curiosity Rover**



Helped construct  
**Burj Khalifa**  
the world's tallest building



Driving efficiency  
in the **processing of over 50%**  
of oil, gas and chemicals



# Sustainability strategy



## Change we empower



Enabling sustainability through our solutions



Empowering stakeholders to accelerate change

## Change we create



Improving sustainability across our value chain



Driving sustainability through our culture and our people

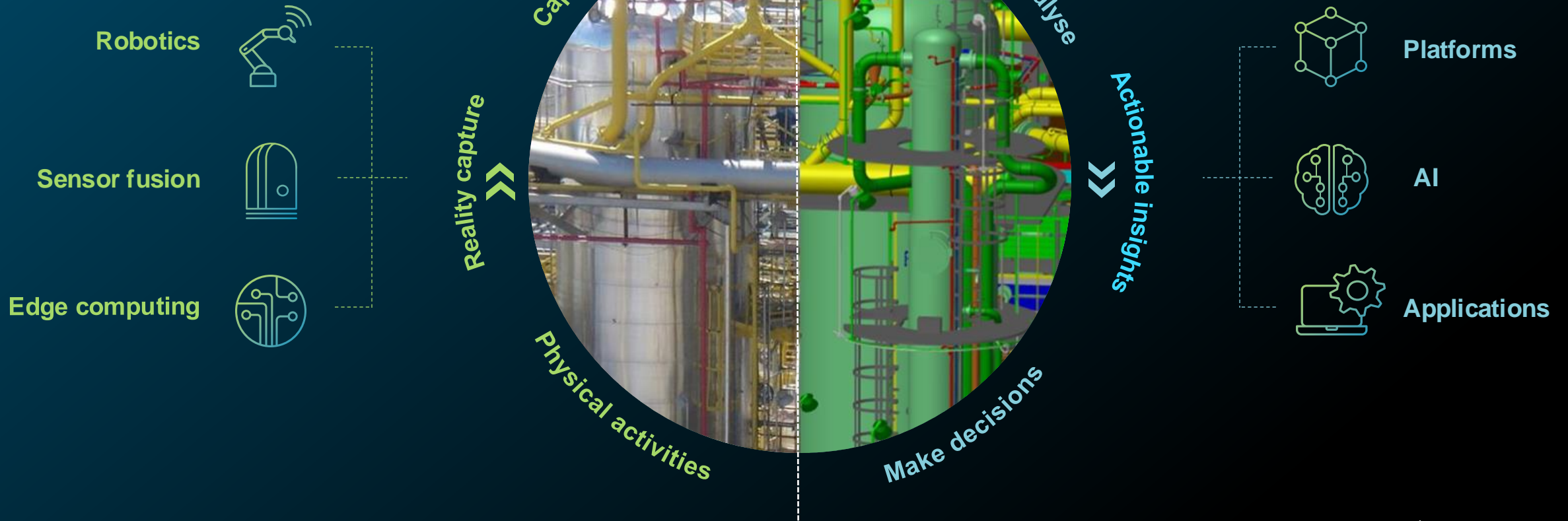
**Value creation**

# The feedback loop

Two worlds, ONE reality  
Workflow-driven  
Real time and autonomous

## Real world

## Digital world



# Value Creation

Reality capture

Actionable insights

Value creation



# Reality capture



**Robotics**



**Sensor fusion**



**Edge computing**

Actionable insights

Value creation



Explore reality capture  
in action.



# Actionable Insights

Reality capture



**Platforms**



**AI**



**Applications**

Value creation



Explore actionable  
insights in action.

# Value creation



**Productivity**



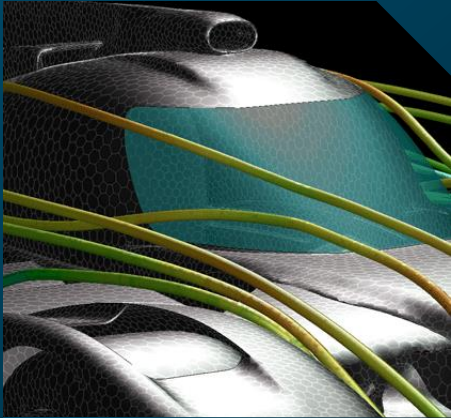
**Quality**



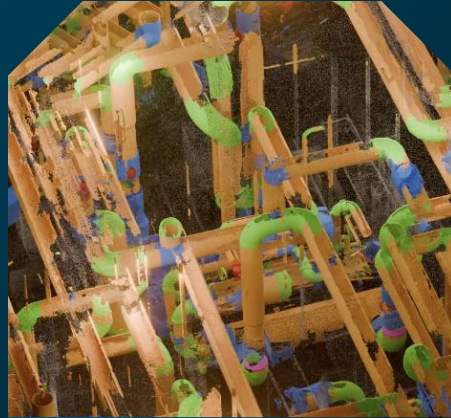
**Sustainability**

Reality capture   Actionable insights

# Value creation



Manufacturing



Heavy industry



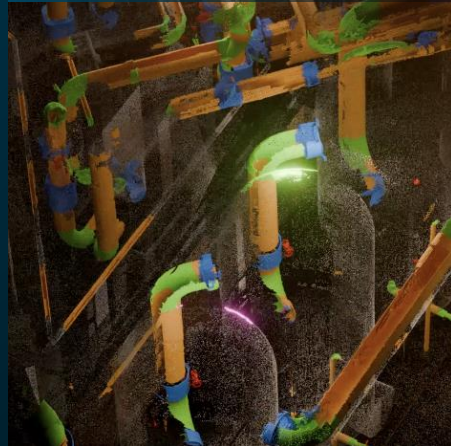
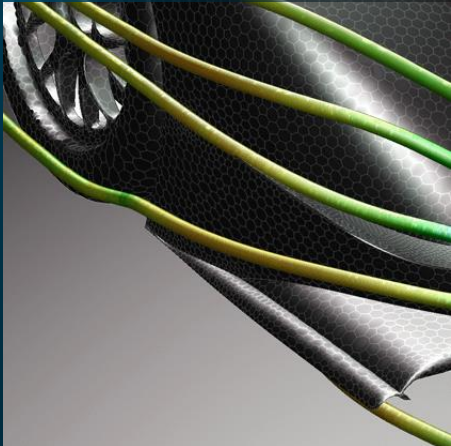
Construction



Mining



Cities and nations





# Manufacturing

Manufacturing success depends on connecting real-world production with digital intelligence – delivering quality, efficiency, and sustainability.

Solutions for the complete lifecycle of discrete manufacturing, enabling manufacturing to:

- learn and adapt quickly to changing conditions in real time
- pursue perfect quality with optimised design, requiring fewer inputs and producing less waste

Hexagon's manufacturing technologies are used in:

95% of cars produced worldwide

90% of aircraft produced worldwide

80% of orthopaedic implants produced

75% of smartphones produced worldwide

98% of manufacturing organisations – report that a single hour of downtime costs over €100,000

Global CO<sub>2</sub> emissions – were a result of 17% of manufacturing in 2019

Did you know?





# Manufacturing

Connect the entire manufacturing ecosystem through a real-time 3D digital replica, seamlessly linking product requirements to outcomes. This enables proactive adjustments, predictive maintenance, and waste reduction while driving sustainable productivity gains.

**Design & engineering phase** – Digitally simulate and optimise product design and engineering to ensure component manufacturability, production productivity and output quality.

**Production phase** – Maintain a digital thread through production, optimise machine tools, measure environmental variances and prevent downtime with predictive data analyses.

**Inspection phase** – Automate and digitalise quality measurement with our world-leading metrology hardware and software, creating a bridge between the real and digital worlds.

**Digital transformation** – Deploy sensor-software systems that transform siloed and disconnected processes into an integrated, data-driven ecosystem that creates value across the product lifecycle – enabling new business models and automating increasingly autonomous, efficient and sustainable workflows.

Hexagon's  
sustainable  
value  
creation







20K

updates to the car per season

400GB

data gathered per race

50%

fewer faults with Hexagon's tech







Watch the  
customer  
story



“

Hexagon has played a vital role in the success we've achieved – not just recently, but over a long period of time as a valued partner to the team. We're using Hexagon to ensure we'll be competitive for years to come.”

**Christian Horner**

Team Principal & Chief Executive Officer  
Oracle Red Bull Racing



# Heavy industry

Hexagon's measurement and autonomous solutions connect the physical and digital worlds – optimising operations, improving safety, and driving sustainability.

Solutions for the complete lifecycle of complex industrial plants and ships, enabling industrial assets to:

- ramp up quickly
- operate safely and reliably throughout a more sustainable, longer-term lifespan

Did you know?



**Hexagon's technologies are driving efficiency for more than half of all oil, gas and chemicals processed around the world.**

**Oil & gas companies** – with vast amounts of semi-structured data on hand, are using less than 1% of it

**Oil demand** – slated to peak by 2030 at about 100 million barrels per day

**Global power** – electricity demand is growing almost twice as fast as total energy demand



# Heavy industry

Hexagon's solutions are enabling customers to leverage data throughout the asset lifecycle – transforming heavy industry into lean, efficient, safe operations that improve the bottom line while assuring a sustainable future.

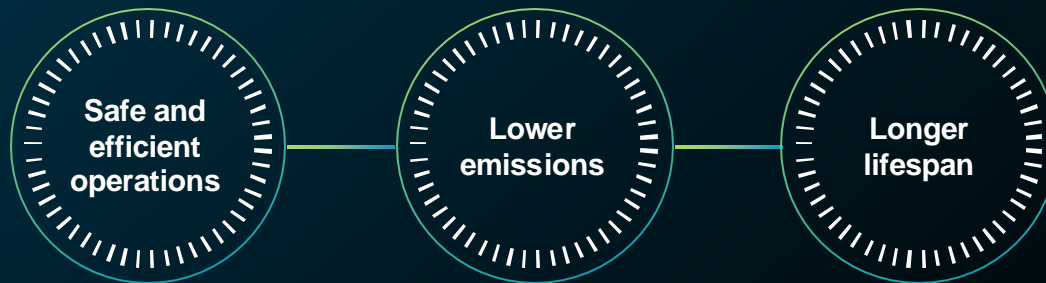
**Plan phase** – Capture an exact digital twin of a site's existing conditions, features, and precise location to facilitate digital design concepts that drive efficiencies and reduce waste throughout the asset lifecycle.

**Design phase** – Transform the project vision into a digital reality with Hexagon's design and engineering software that is the gold standard for precision and ease of use.

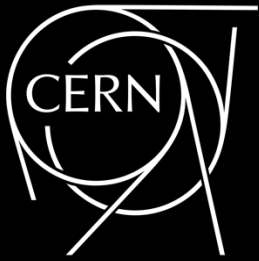
**Build phase** – Orchestrate a construction project that is a model of productivity and efficiency – achieving the highest quality while avoiding rework and waste.

**Operate & maintain phase** – Leverage data from the planning, design and build phases to create an operational twin that connects people, processes and events throughout the entire industrial facility lifecycle.

Hexagon's  
sustainable  
value  
creation







# 100M

parts in the Large Hadron Collider,  
built in a 27km ring 175m underground

# .000001

of a meter precision measurements  
from Hexagon's laser trackers

# 10-20 MINS

of time saved per maintenance call







Watch the  
customer  
story



“  
**Hexagon's technologies  
help CERN explore the  
remaining mysteries  
of the universe.”**

**David Widegren**  
Head of Engineering  
Information Management  
CERN



# Mining

Safer, smarter, and more sustainable mining starts with understanding reality. From exploration to operations, Hexagon optimises every step.

Solutions for the complete lifecycle of open pit and underground mines, enabling mines to:

- operate efficiently
- maximise safety
- minimally impact the environment

Did you know?

**Hexagon's collision and avoidance systems protect 40% of mining sites worldwide.**

**12% of Global GDP** – mining revenue is expected to reach \$2.4 trillion by 2025 with a CAGR of 7%

**Energy and climate change** – the world's move to clean energy is dependent on mines, with EV batteries increasing the demand for nickel 10-fold from 2018 levels

**Diminishing returns** – the net profit margin of the mining industry decreased from 25% in 2010 to 11% in 2020



# Mining

Hexagon's life-of-a-mine solutions connect and leverage data from planning to operations – from safety to sustainable reclamation – making it possible for customers to extract 100% of a mine's potential value safely, sustainably and profitably.

**Exploration** – Empower the mine exploration process with the ability to store, manage and analyse drillhole data, perform geological interpretation of deposits and generate accurate block models.

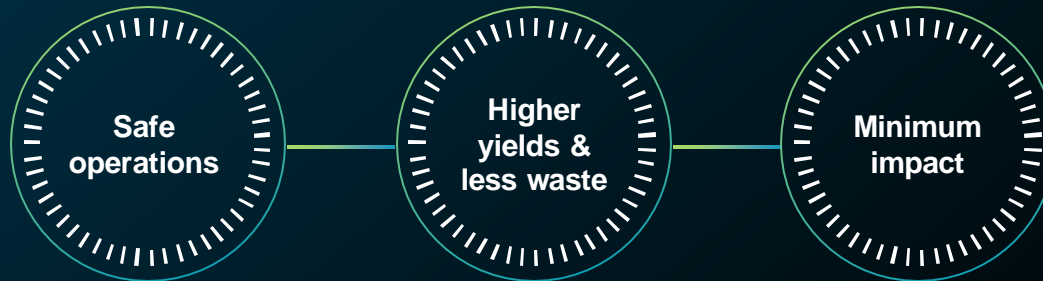
**Planning** – Access powerful 3D modelling and simulation, data visualisation and planning software for geologists and engineers that supports seamless workflows from exploration to production.

**Drill and blast** – Calculate and analyse the efficiency of each step in the drill and blast process via a tailored feedback loop to ensure continuous improvement through accuracy and precision.

**Material movement** – Execute successful material movement through planning, fleet management, safety and slope monitoring powered by integrated mining technology.

**Survey and monitoring** – Enable quick and informed decision-making with intelligent and comprehensive monitoring solutions that don't compromise on safety or productivity.

**Hexagon's  
sustainable  
value  
creation**







7%

fuel efficiency improvement

---

4-8%

reduction in cost

---

12-15%

reduction in time





Watch the  
customer  
story

“

The world is dependent on us.  
That's where the technology from  
Hexagon comes in ... Hexagon is  
helping us become the mining  
champion of the future.

**Bob Wilt**  
Chief Executive Officer  
Ma'aden



# Construction

Bringing the built world to life requires connecting real-world conditions with precise planning, ensuring efficiency and sustainability.

Solutions for the complete construction lifecycle ensuring:

- projects are optimised to reduce rework and build to plan – on time and on budget
- human and material resources are protected throughout the life of the asset

**Hexagon's technology helped construct the world's tallest building, the Burj Khalifa, in Dubai at 829.8 meters (over a half mile high).**

**13,000 buildings per day** – the number of buildings that must be built per day to keep pace with population and urban growth

**Sustainability diet needed** – 1 consumer of global raw materials is the construction industry

**Energy and climate change** – 40% of global greenhouse gas emissions are attributable to our built environment

Did you know?





# Construction

Hexagon's solutions are changing the way buildings are planned, designed, constructed and utilised – ensuring data is captured, connected, visualised and updated throughout the lifecycle to deliver better performance and lower environmental impact and at a lower cost.

**Design phase** – Capture an accurate digital reality of a building site's existing conditions, features and positioning, and digitally design initial concepts to minimise inputs and reduce waste during the project.

**Plan phase** – Transform vision and design into a plan of action, digitally mapping out every detail for the construction phase including time, materials, scheduling and cost.

**Build phase** – Orchestrate the construction process more simply, creating a model of productivity and efficiency, with higher quality, fewer reworks and less waste while ensuring worksite safety.

**Operate & maintain phase** – Leverage all data from design, plan and build phases to create a digital reality that delivers full transparency to every element of the completed building to optimise operations, maintenance, safety and resiliency.

Hexagon's  
sustainable  
value  
creation





A low-angle, upward-looking photograph of several modern skyscrapers with glass facades, reaching towards a cloudy sky. The perspective creates a sense of height and scale.

# SKANSKA

## 10K

projects worldwide

---

## 2 DAYS

to scan entire 23-story office  
building vs 1-2 weeks using  
traditional methods

---

## 10 MIN

of training to use BLK2GO  
scanner



# Cities & Nations

Smart cities rely on accurate data. Hexagon measures, maps, and manages urban environments to create sustainable, thriving communities.

Solutions for the complex systems of enabling governments, industry and citizens to work together to build safe and vibrant communities that promise:

- public safety
- economic vitality and quality of life for citizens

Did you know?



**Hexagon's public safety solutions protect almost 1 billion people on the planet.**

**Deep impact** – cities occupy just 3% of the Earth's land but account for up to 80% of energy consumption, waste and carbon emissions

**Cities can save the world** – achieving up to 40% of the emissions reductions necessary to limit global warming to 1.5 °C

**900 million people** – by most conservative estimates reside in poor living conditions



# Cities & Nations

Hexagon's solutions make cities and nations safe, resilient, agile and sustainable while reducing their total operating cost by connecting mission and business-critical data to make timelier, well-informed decisions.

**Public safety** – Improve the quality, accuracy and availability of critical information with integrated smart city and nation solutions that enhance public safety, security performance and productivity.

**Public administration** – Easily share data for census, cadastral management, public works and interagency situational awareness with cloud-based applications and collaborative solutions.

**Transportation** – Deploy intuitive, integrated transportation solutions for traffic, railways and airports to ensure fast and effective incident response while enhancing safety with minimal disruption.

**Utilities & communications** – Achieve greater network service reliability, enhance integrity, increase efficiency and fulfill the expectations of utility stakeholders with Hexagon's location-based technologies.

**Mapping** – Capture, visualise, analyse and derive insights from location data to address a variety of urban and national challenges.

**Industrial & commercial resiliency** – Forge safer industrial and commercial facilities with scalable surveillance, security and incident management capabilities.

Hexagon's  
sustainable  
value  
creation



# 1.6K KM<sup>2</sup>

mapped to develop Spain's first digital twin

# 5 CM

distance between individual images to create the digital twin

# 4 TB

of data captured across 200K angled images and 50K straight-down images





**Thank you.**

