


Power Portfolio

GIS, remote sensing, photogrammetry and data management technologies to derive insight from location information





Across myriad industries, digitalization is transforming the way business is done and decisions are made, and in this time of uncertainty around the world, dealing with transformation can be daunting.

Governments need to maintain safe communities, deliver effective services and manage critical infrastructure, all while engaging transparently with residents.

Transportation agencies are dealing with the challenges of aging infrastructure, increasing traffic and freight and decreasing budgets, not to mention safety.

Defense organizations need to stay ahead of threats. More and better information is key, but making the best use of mission-critical data can be a challenge.

Utilities and communications companies must handle sudden disruptions, provide prompt information to customers and monitor network infrastructure above and below ground.

Is it possible to save time and money, leverage existing data investments and improve your analysis capabilities? Yes, it is.

Hexagon's **Power Portfolio** enables you to understand change and derive information you require to make mission- and business-critical decisions. With creative and intuitive interfaces, smart workflows and automated technologies, the Power Portfolio enables you to transform multisource content into actionable information. It allows you to:

- Harness data production and big data management
- Customize and easily interpret geospatial analytics
- Deliver context and industry-specific information through the cloud to the online, digital and mobile world



What is the Power Portfolio?

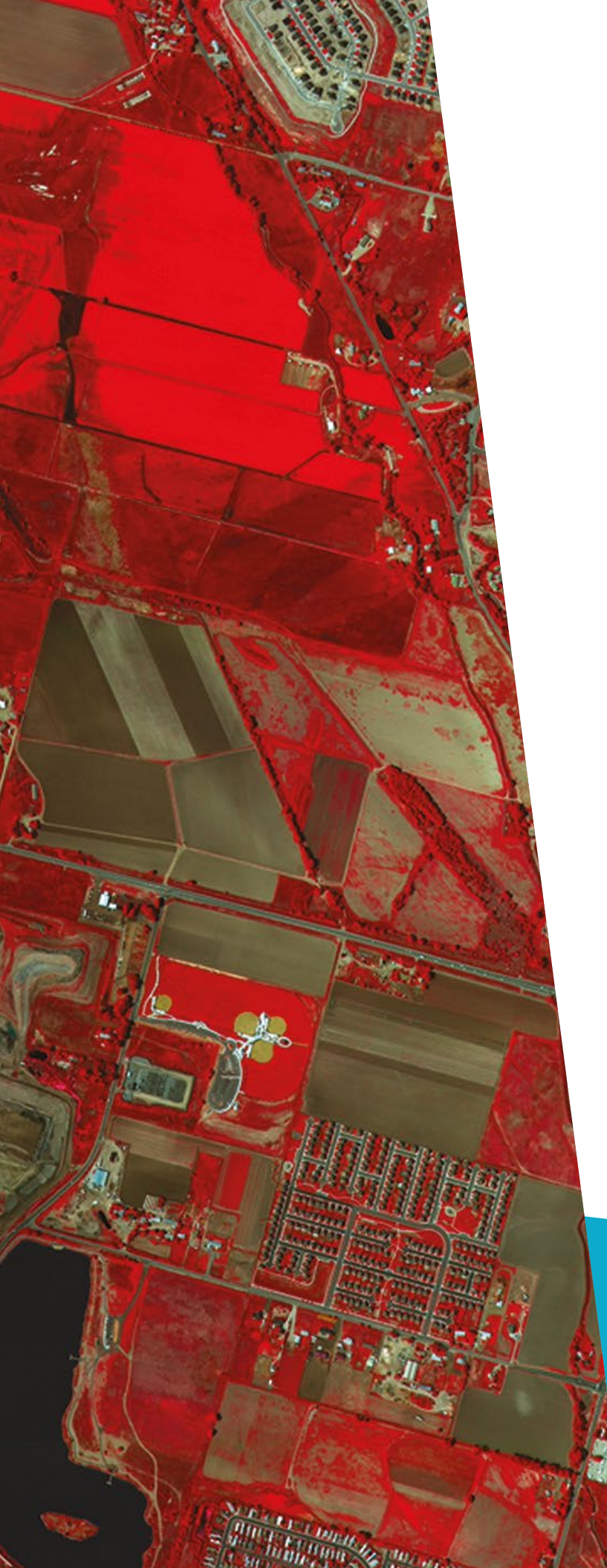
The Power Portfolio combines the best photogrammetry, remote sensing, GIS and cartography technologies available. They help organizations collect, process, analyze and understand geospatial data; organize geospatial and business data into centralized libraries for easy sharing; and deliver information through web and mobile applications – including custom apps and solutions.

Flowing seamlessly from the desktop to server-based solutions, these technologies specialize in data organization, automated geoprocessing, spatial data infrastructure, workflow optimization, web editing and web mapping. With this united approach, you are able to see the big picture and make sense of change.

How can it be used?

- Imagery analysis and mapping for defense organizations
- City planning, police and fire departments and emergency services
- Online databases that share city information, maps and more with the public
- Remote access for field crews who need to access their organisations' GIS
- National mapping agencies and map production agencies
- Safety analysis and traffic tracking for transportation agencies
- Traffic light and bridge inspection for transportation authorities
- Network inspectors in utility companies
- Project tracking, work scheduling in utility companies
- Pole or vegetation inspection for utilities or public works
- Cell or mobile tower site inspection for communications companies
- Forest monitoring for fires, tree health and wildlife

At Hexagon, we know and understand that every business has different needs, so we provide the flexibility for you to focus on the tools you require.



GIS, remote sensing and photogrammetry

Our desktop-based GIS, remote sensing and photogrammetry offerings help you:

- Process large quantities of raw spatial information
- Unearth insightful information from imagery, terrain, radar and LiDAR data sources
- Create, update and analyze valuable geospatial information
- Deliver dynamic analysis and mapping products

GIS

Our complete GIS package is a flexible solution for creating, updating, managing and analyzing your organization's valuable geospatial information. Highly specialized functionality makes it ideal for extracting information from an array of ever-changing data. With our GIS products, you can:

- **Generate** and **update** vector layers, perform dynamic spatial analysis and reports and automatically create and update maps while managing data and map production more efficiently
- **Exploit** the power of your corporate database with support for extensive native spatial datatypes, with no middleware required
- **Leverage** a high degree of performance while reliably meeting your demands through our flexible architecture

Remote sensing

Deploy the world's most widely used remote sensing software solution, combining imagery, terrain, radar and point cloud data sources with artificial intelligence algorithms to extract rich information that cannot be detected through visual inspection alone. Our remote sensing software enables you to:





- **Create** remarkable value-added products seamlessly and simply through automated and wizard-driven workflows
- **Combine** our next-generation Spatial Modeler with your ingenuity to greatly expand your problem-solving capabilities
- **Optimize** your hardware investment by distributing batch processes across a network of computers, saving time and money

Photogrammetry

Connect large quantities of raw spatial information about locations on the Earth's surface and transform that data into actionable formats with our photogrammetry products, which allow you to:

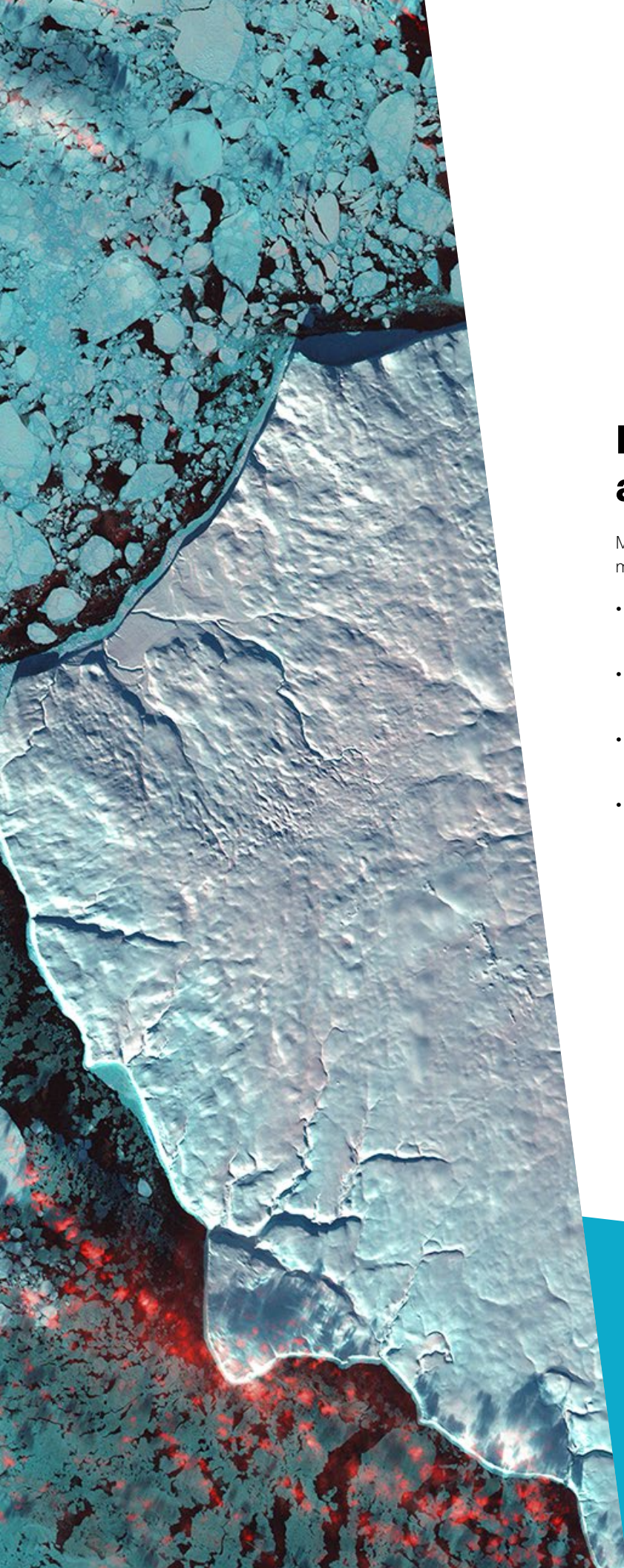
- **Collect** and **update** features for your enterprise GIS using photogrammetric techniques
- **Employ** a single, seamless, process-driven workflow for triangulation, terrain generation and editing, ortho-mosaic creation and 3D feature extraction
- **Leverage** our photogrammetric expertise with extensions for real stereo visualization and precise 3D feature and terrain collection within other geospatial environments (such as MicroStation, Esri and more)

Power to author

- GIS**
 - GeoMedia 
- Remote sensing**
 - ERDAS IMAGINE 
 - ERDAS ER Mapper 
- Photogrammetry**
 - ImageStation 
 - IMAGINE Photogrammetry
 - ERDAS Extensions for ArcGIS



Utility organizations use GeoMedia to better plan, operate and manage assets using geospatial intelligence and smart workflows.



Data management and compression

Manage and deliver your data to others. Our data management and compression solutions allow you to:

- Organize file-based, database and web-enabled geospatial and business data into a centralized library
- Distribute data from the cloud or on-premises across desktop, web and mobile applications
- Proliferate geospatial data within and across large, disparate organizations
- Optimize disk space requirements, reducing total cost of ownership



Data management

Organize vast amounts of distributed geospatial and business data into a centralized and comprehensive library. With our data management solution, you can:




- **Provide** a central data repository for all geospatial and business data while minimizing infrastructure needs
- **Enable** complex searches of assets against rich metadata
- **Distribute** massive amounts of data to thousands of users efficiently and quickly, in a variety of delivery protocols
- **Empower** your end users to create value-added data products so they can make sense of change

Compression

Alleviate pressures associated with expanding imagery data holdings and requirements of an increasingly demanding and diverse user base. Our proprietary Enhanced Compression Wavelet (ECW) file format is the best in the business, and our industry leading ISO JPEG2000 support satisfies all geospatial image compression needs. With our compression products, you can:

- **Capitalize** on the fastest, lowest-load and lowest-cost image compression and decompression available on the market today
- **Deploy** a visually lossless file format that can curtail disk space requirements by up to 95%
- **Reduce** the cost of storage and associated management tasks through tremendous efficiency of ECW technologies

Power to manage

- Data management** 
 - ERDAS APOLLO
- Compression** 
 - GeoCompressor
 - ERDAS ECW/JP2 SDK
 - ECW for ArcGIS Desktop/Server 



3D meshes are served with lightning speed in ERDAS APOLLO.



WebGIS

Our WebGIS solutions enable you to deliver information through the development of a web, mobile or cloud solution. Information derived from WebGIS technologies enable you to derive reliable, context- specific information necessary for making informed decisions and allow you to:

- Build customized geospatial apps and solutions with a sophisticated set of developer-focused technologies
- Extend geospatial functionality where you need it – in the cloud or on web, on desktop and mobile devices using modern and dynamic toolkits

Smart workflows

Empower end users without significant geospatial backgrounds to leverage advanced geospatial functionality in their workflows. With smart workflows, you can:

- **Integrate** geospatial information and focused business processes
- **Construct** powerful, highly constrained, map-based processes that guide the user step by step through creating and attributing geospatial data
- **Avoid** the cost and complexity of desktop GIS by utilizing supporting high-end functionality and disconnected workflows in a web-based client application

WebGIS

Bring real-time enterprise data access and sophisticated analysis to the web with a fully scalable and customizable server solution that deploys high-end web services and websites. WebGIS allows you to:

- **Deploy** a flexible solution to manage secure information and serve it to a wide variety of desktop, web and mobile applications
- **Provide** secure integration with existing GIS, CAD environments and business systems with our interoperable platform built on proven technological standards
- **Customize** your web interface, create user-defined queries and provide direct access to your geospatial data
- **Ensure** firm adherence to Open Geospatial Consortium (OGC) and International Standards Organization (ISO) standards for web services and metadata compliance

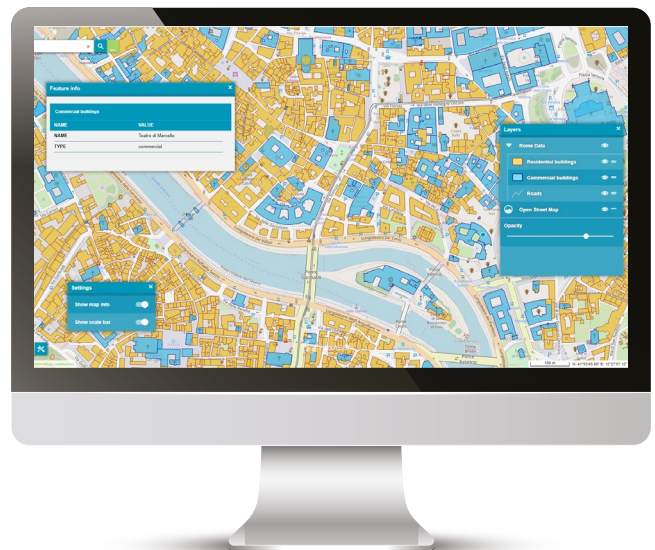
Mobile

Embracing the ever-broadening capabilities of today's mobile devices, we provide several pre-packaged, yet easily customizable, mobile applications. With our mobile applications, you can:

- **Access, review** and **update** geospatial data and asset information in real time in the field, online and offline
- **Tap** into data and analytics to support specific business workflows

Power to build solutions

- Smart workflows**
 - GeoMedia Smart Client 
- WebGIS**
 - GeoMedia WebMap 
 - Geospatial SDI 
 - Geospatial Portal 
- Mobile**
 - GeoMedia WebMap Mobile 



Better understand your GIS data by placing it in the appropriate geographical context.





Your complete geospatial solution

Hexagon's Power Portfolio provides a simple, sophisticated, integrated approach to harnessing the traditional domains of GIS, remote sensing, photogrammetry and mapping with applications across the enterprise.

As change happens, you can derive real-time information. Providing the utmost flexibility, the Power Portfolio provides a complete solution and the building blocks to develop customized applications to meet your needs.

We provide software products and platforms through direct sales, channel partners and Hexagon businesses. Hexagon's geospatial technology plays a key role in Hexagon's multiindustry focus, leveraging the entire portfolio for a wide variety of geospatial needs.



Hexagon is the global leader in digital reality solutions, combining sensor, software and autonomous technologies. We are putting data to work to boost efficiency, productivity, quality and safety across industrial, manufacturing, infrastructure, public sector, and mobility applications. Our technologies are shaping production and people-related ecosystems to become increasingly connected and autonomous – ensuring a scalable, sustainable future.

Hexagon's Safety, Infrastructure & Geospatial division improves the resilience and sustainability of the world's critical services and infrastructure. Our solutions turn complex data about people, places and assets into meaningful information and capabilities for better, faster decision-making in public safety, utilities, defense, transportation and government. Learn more at hexagon.com and follow us [@HexagonAB](https://twitter.com/HexagonAB).