



Beta release guide  
LuciadLightspeed 2024.0

---

# Beta release guide

LuciadLightspeed 2024.0

13 May 2024

## Contents

<b>About this release</b> .....	3
<b>Benefits of new features</b> .....	4
Upgraded support for radar video .....	4
Sample code/documentation to get you started.....	4
Java and security upgrades .....	5
Java support .....	5
Security updates .....	6
Improved vertical datum support.....	6
Improved ECW support.....	7
Upgrade considerations .....	8
Other improvements.....	8
<b>About Hexagon</b> .....	10

## About this release

The 2024.0 release of LuciadLightspeed includes a structurally revised radar video capability. We now support variations in resolution and rotation speed during operation of the radar.

In addition, this release combines an impressive number of specifically requested features. Developers will benefit from the raised minimal Java version and many security upgrades. Moreover, MBTiles and ECW format support have been extended. This document lists the most noteworthy improvements.

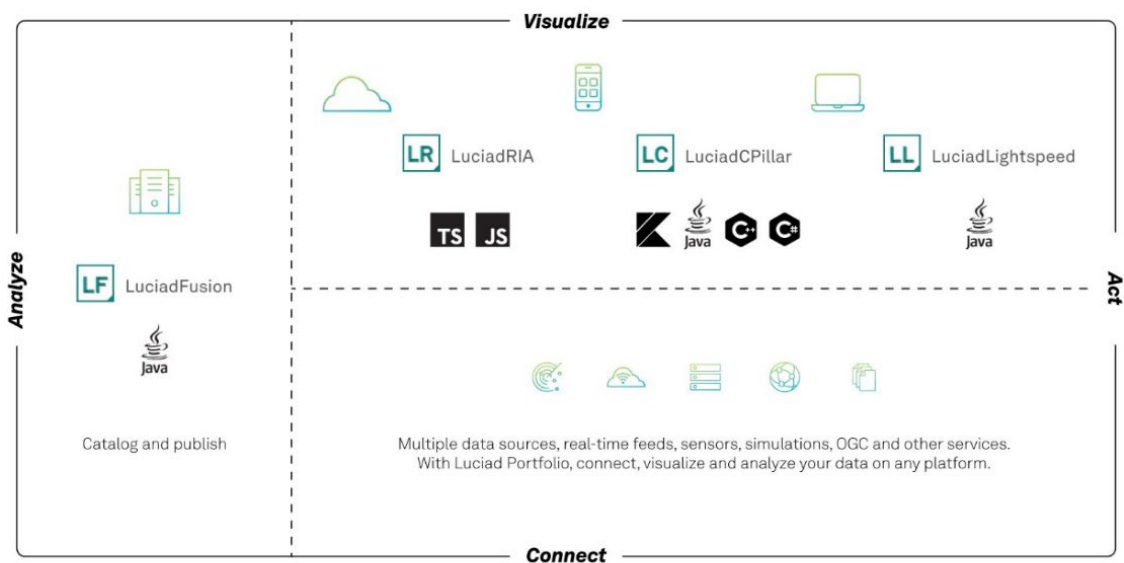


Figure 1: The Luciad portfolio

# Benefits of new features

## Upgraded support for radar video

LuciadLightspeed has offered a direct connection to radar video since version 2014. This includes a decoder for Asterix<sup>1</sup> Category 240 data (see Figure 2). Over time, this component was updated and saw additional configuration possibilities, up to adding your own custom radar feed. Recently, we learned that users encounter more and more radar feeds that no longer comply with our previous assumption that the resolution of the input and the rotation angle are constant for a specific radar. We took our radar capability back to the lab and structurally changed our approach.

LuciadLightspeed can now connect to and visualize radar data with varying angular and radial resolution. It supports variable rotation speed of the sweep line, including the case where it remains fixed. This improvement results, in most cases, in better performance. We kept the previous behavior so you can decide what fits best for your use case. Translated to API, this means `TLspRadarVideoLayerBuilder` now can work with radar feeds whose angular or radial resolution are variable over time. This requires the user to manually specify the resolution of the visualization, which is then effectively decoupled from that of the data. The new method `resamplingSettings()` on the layer builder is used to enable this behavior. If called, the radar video layer will be fully robust against all variations in the resolution of the incoming data.

This setting specifies the resolution and range of the radar data that is visualized. Data that lies outside the specified distance and azimuth range will not be displayed, and incoming data will be resampled to match the requested radial and angular resolution. If this method is not called, the layer will infer the range and resolution of the radar feed by looking at the data records, but this requires the feed resolution to be constant. The latter corresponds to the behavior of the radar video support in previous product versions.

## Sample code/documentation to get you started

The article “Visualizing radar video” will be updated, but the update did not make the beta release. If you have questions while testing this capability, please contact us via support.

---

1

[https://dev.luciad.com/portal/productDocumentation/LucidLightspeed/docs/articles/guide/asterix/decoding.html#\\_asterix\\_formats](https://dev.luciad.com/portal/productDocumentation/LucidLightspeed/docs/articles/guide/asterix/decoding.html#_asterix_formats)

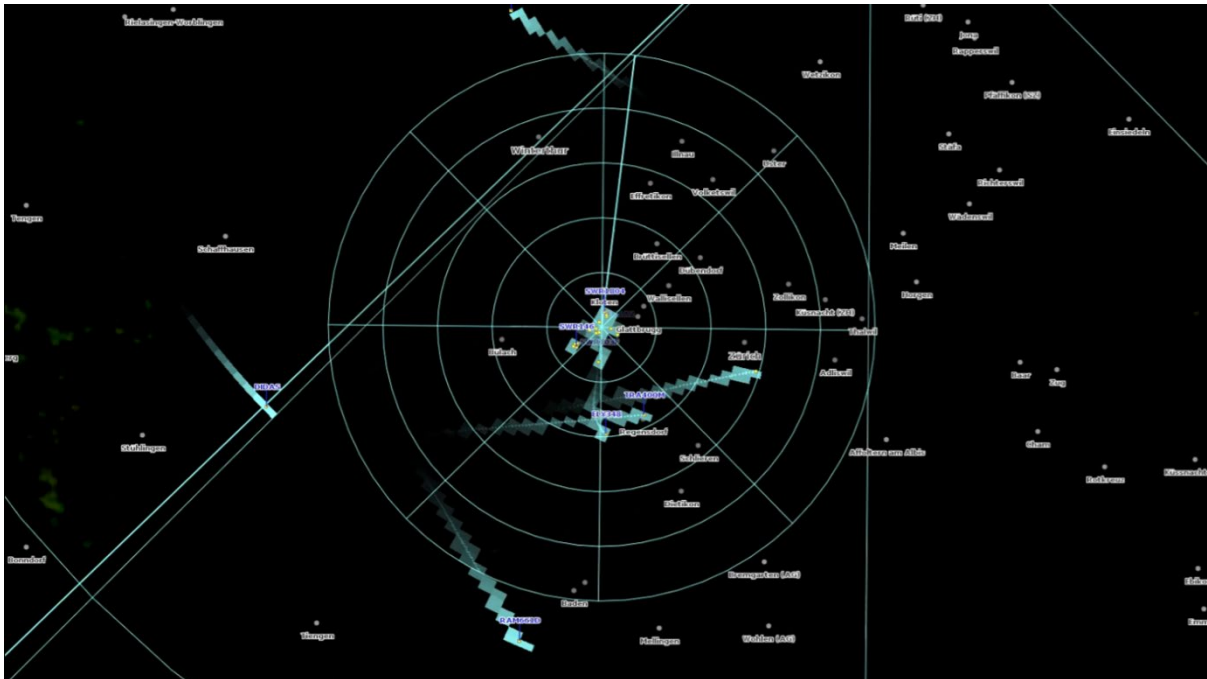


Figure 2: The Asterix Cat. 240 sample showing radar video data

## Java and security upgrades

### Java support

Up to and including LuciadLightspeed version 2023, the minimal required Java version was 8. This was based on customer demand. With all the changes introduced by Oracle over the past years, we received explicit demands to continue supporting Java 8. In the meantime, priorities have shifted, also for our customers. One of the factors is that many third-party libraries have in the meantime raised their minimal required Java versions. The LTS versions after Java 8 are 11 and 17. This past September, the premier support for Java 11 ended<sup>2</sup>, so we decided to raise the minimal supported Java version on our side to Java 17. At the same time, we also made sure that LuciadLightspeed supports Java 21. The supported Java versions are documented within “Hardware and software requirements” in the product documentation; see also Figure 3.

The Article “Integrate LuciadLightspeed into your IDE” has also been updated.

---

<sup>2</sup> [www.oracle.com/be/java/technologies/java-se-support-roadmap.html](https://www.oracle.com/be/java/technologies/java-se-support-roadmap.html)

Luciad aims to support the latest Java LTS version in its latest releases. The minimum JDK/JRE requirements never change with a minor upgrade (an upgrade from 2022.0 to 2022.1, for instance) or a patch release of LuciadFusion.

Table 1. Supported Java versions

	OracleJDK	OpenJDK
LuciadFusion 2017 and earlier	8	not supported
LuciadFusion 2018 <sup>[1]</sup>	8, 11	11
LuciadFusion 2019	8, 11	11
LuciadFusion 2020	8, 11	11
LuciadFusion 2021 <sup>[2]</sup>	8, 11, 17	11, 17
LuciadFusion 2022	8, 11, 17	11, 17
LuciadFusion 2023	8, 11, 17	11, 17
LuciadFusion 2024	17, 21	17, 21

Figure 3: The supported Java versions are documented within the “Hardware and software requirements” section in the product documentation.

## Security updates

The 2024.0 release of LuciadLightspeed includes several security updates. The release notes provide full details on the updated, removed and added dependencies. Please look for “security updates” in the upgrade considerations.

Various updates resulted in some upgrade considerations:

- The third-party library GDAL was updated to version 3.8.3. With this update, the TLcdGDALModelDecoder can no longer decode Arc/Info Export E00 GRID files. The GDAL library no longer offers supports for this format.
- The minimum supported glibc (GNU C Library) for Linux has been raised to 2.28. This means that Ubuntu 18 is no longer supported.
- This version of LuciadLightspeed no longer supports 32-bit Linux for the GXY view. For the full list, please consult the release notes.

## Improved vertical datum support

The default behavior of many model decoders, used to decode elevation data, has been changed. We now enable support for vertical datums by default. Supporting vertical datums will cause the appropriate geoid elevation to be applied to the data. This provides more accurate elevation values.

The affected elevation data formats are DEM, DMED/DTED, ETOPO, GeoTIFF, LAS/LAZ and SwissDHM.



After this change, the geoid elevation will be applied to your elevation data. Your elevation layers may be painted at a different height, which can cause data on your other layers to be misaligned with your terrain layer. You should check that your terrain layer is still properly aligned with your other layers, especially if you are using the terrain analysis (TEA) module.

If your data is misaligned after this change you can try to resolve it in the following ways:

- Update your other layers to use the same vertical datum reference as your elevation data
- Disable geoid support for a specific model decoder, by calling the method `#setSupportGeoidDatums(boolean)`
- Disable geoid support for all model decoders, by setting the system property `com.luciad.geodesy.geoidSupport.LEGACY` to true

## Improved ECW<sup>3</sup> support

LuciadLightspeed users can now visualize ECW images with any number of bands and any bit depth. To support this, the previous libraries were replaced by the native libraries provided as part of ERDAS ECW JP2 SDK3 version 6.1.0.

As a result, you can now use image processing on ECW data. LuciadLightspeed's image processing framework allows you to access images built from raster data and enhance or highlight certain aspects of the raster data for display. You can make use of various image manipulation operations, including typical image operations to work with multiband images, high dynamic range (HDR) images and low-quality images.

Note: This improvement resulted in a few upgrade considerations. Please check the release notes for more details.

## Sample code/documentation to get you started

For information about handling raster data within LuciadLightspeed, refer to the documentation entry "Models: Handling raster data."

---

<sup>3</sup> [https://bynder.hexagon.com/m/3dab4b4268e27bd6/original/Hexagon\\_GSP\\_ECW\\_JP2\\_SDK\\_Product\\_Sheet.pdf](https://bynder.hexagon.com/m/3dab4b4268e27bd6/original/Hexagon_GSP_ECW_JP2_SDK_Product_Sheet.pdf)

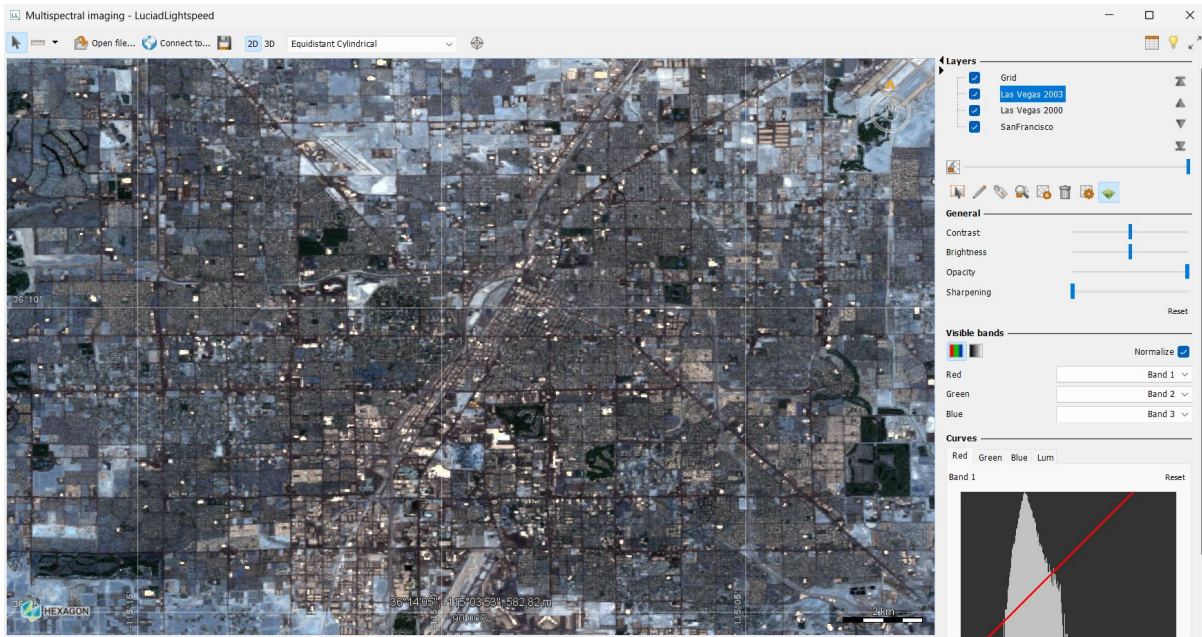


Figure 4 The "multispectral" sample illustrates how to work with multiband or HDR imagery.

## Upgrade considerations

This section lists some noteworthy other upgrade considerations:

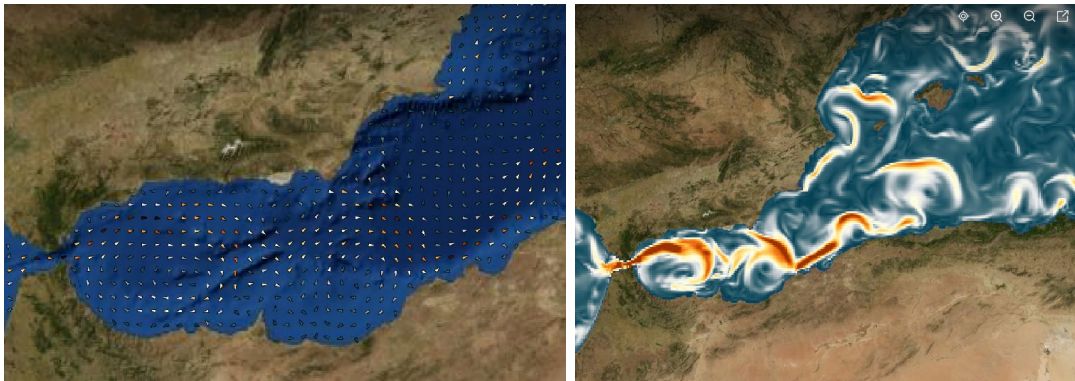
- **Oracle** versions 8, 9i, 10g, 11g, 12c and 18c are no longer supported as a database by the TLcdOracleSpatialModelDecoder, TLcdOracleSpatialModelEncoder and TLcdOracleGeoRasterModelDecoder. These versions are no longer supported by Oracle; see the Oracle Lifetime Support Policy document. It's advisable to upgrade to a newer version of Oracle database if you are still using any of these versions.
- **PostgreSQL** versions 8.x, 9.x, 10 and 11 are no longer supported as a database by the TLcdPostGISModelDecoder and TLcdPostGISModelEncoder. These versions are no longer supported by the PostgreSQL Global Development Group; see the PostgreSQL Versioning Policy page. It's advisable to upgrade to a newer version of PostgreSQL if you are still using any of these versions.
- **SQL Server** versions 2008 and 2012 are no longer supported by the TLcdMSSQLModelDecoder and TLcdMSSQLModelEncoder. It's advisable to upgrade to a newer version of SQL Server if you are still using version 2008 or 2012.

## Other improvements

- **Replace a color:** LuciadLightspeed now supports replacing one or more colors within an image. A common example is a satellite image that comes with black or white borders. You can use this new capability as follows:
  - Use the image processing API and rely on the newly introduced "TLcdPixelReplaceOp" operator



- Use OGC SE/SLD, via a Luciad-specific option. For more information, please consult the new article “How to replace a color”.
- **MBTiles decoder supports data from file and from service:** LuciadFusion now offers a new service type for serving MBTiles data, including both raster and vector MBTiles data. LuciadLightspeed can connect to these services.
- **Apply a colormap on 2-band measurement data using OGC SE/SLD:** You can now use SLD styles with color maps to render dual-band raster data, such as wind or water velocity data decoded from OGC NetCDF files. Such data consists of a U and a V band that respectively represent a magnitude value parallel to the X and Y axis. The SLD rendering pipeline calculates the magnitude for a vector that combines the U and V bands, on which the color map is applied (See Figure 5). This improvement was already released as part of one of the 2023.1 patches.



*Figure 5: You can now apply a color map to dual band raster, like water current. The picture on the left depicts the previous solution; on the right you can see how the new colormap capability provides a more intuitive view of the currents.*



## About Hexagon

Hexagon is the global leader in digital reality solutions, combining sensor, software and autonomous technologies. We are putting data to work to boost efficiency, productivity, quality and safety across industrial, manufacturing, infrastructure, public sector, and mobility applications.

Our technologies are shaping production- and people-related ecosystems to become increasingly connected and autonomous – ensuring a scalable, sustainable future.

Hexagon's Safety, Infrastructure & Geospatial division improves the resilience and sustainability of the world's critical services and infrastructure. Our solutions turn complex data about people, places and assets into meaningful information and capabilities for better, faster decision-making in public safety, utilities, defense, transportation and government.

Hexagon (Nasdaq Stockholm: HEXA B) has approximately 24,500 employees in 50 countries and net sales of approximately 5.4bn EUR. Learn more at [hexagon.com](https://hexagon.com) and follow us [@HexagonAB](https://twitter.com/HexagonAB).

### Copyright

© 2024 Hexagon AB and/or its subsidiaries and affiliates. All rights reserved

Warning: The product made the subject of this documentation, including the computer program, icons, graphical symbols, file formats, audio-visual displays and documentation (including this documentation) (collectively, the "Subject Product") may be used only as permitted under the applicable software license agreement, and subject to all limitations and terms applicable to use of the Subject Product therein. The Subject Product contains confidential and proprietary information of Intergraph Corporation, a member of the Hexagon Group of companies ("Hexagon"), its affiliates, and/or third parties. As such, the Subject Product is protected by patent, trademark, copyright and/or trade secret law and may not be transferred, assigned, provided, or otherwise made available to any third party in violation of applicable terms and conditions cited further below.

### Terms of use

By installing, copying, downloading, accessing, viewing or otherwise using the Subject Product, you agree to be bound by the terms of the EULA found here:

[https://legaldocs.hexagon.com/sig/Licenses/EULA\\_SA\\_SIG-Eng\\_062021.pdf](https://legaldocs.hexagon.com/sig/Licenses/EULA_SA_SIG-Eng_062021.pdf).

### Disclaimers

Hexagon and its suppliers believe the information in this publication is accurate as of its publication date. Hexagon is not responsible for any error that may appear in this document. The information and the software discussed in this document are subject to change without notice.

Language translation disclaimer: The official version of the documentation is in English. Any translation of this document into a language other than English is not an official version and has been provided for convenience only. Some portions of a translation may have been created using machine translation. Any translation is provided "as is." Any discrepancies or differences occurring in a translation versus the official English version are not binding and have no legal effect for compliance or enforcement purposes. Hexagon disclaims any and all warranties, whether express or implied, as to the accuracy of any translation.

Reasonable efforts have been made to provide an accurate translation; however, no translation, whether automated or provided by human translators is perfect. If any questions arise related to the accuracy of the information contained in a translated version of documentation, please refer to its official English version. Additionally, some text, graphics, PDF documents and other accompanying material may not have been translated.



## Links to third-party websites

This document may provide links to third-party websites for your convenience and information. Third-party websites will be governed by their own terms and conditions. Hexagon does not endorse companies or products to which it links.

Third-party websites are owned and operated by independent parties over which Hexagon has no control. Hexagon shall not have any liability resulting from your use of the third-party website. Any link you make to or from the third-party website will be at your own risk and any information you share with the third-party website will be subject to the terms of the third-party website, including those relating to confidentiality, data privacy and security.

Hexagon provides access to Hexagon international data and, therefore, may contain references or cross references to Hexagon products, programs and services that are not announced in your country. These references do not imply that Hexagon intends to announce such products, programs or services in your country.

## Revisions

Hexagon reserves the right to revise these terms at any time. You are responsible for regularly reviewing these terms. Your continued use of this document after the effective date of such changes constitutes your acceptance of and agreement to such changes.

## Questions

[Contact us](#) with any questions regarding these terms.