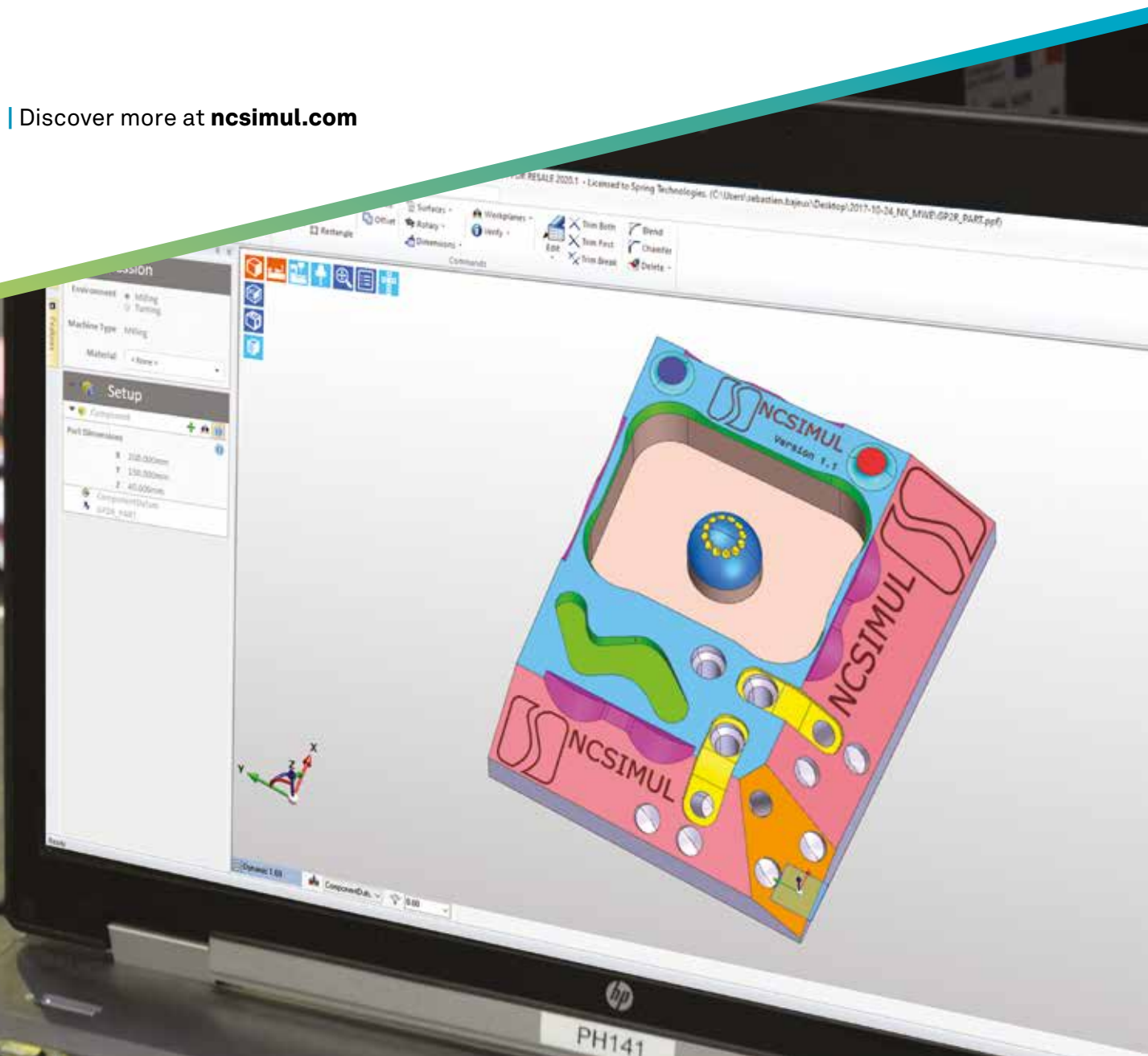


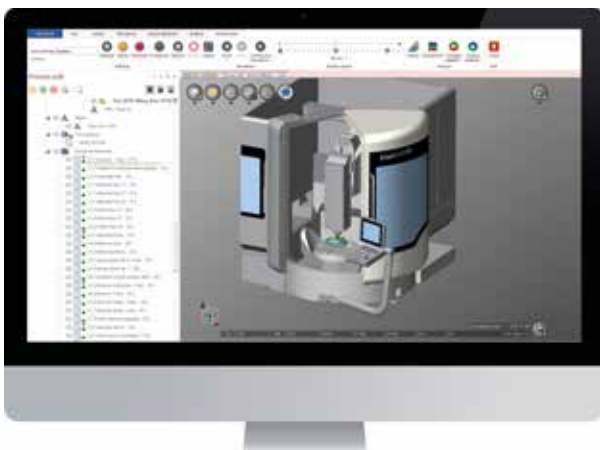
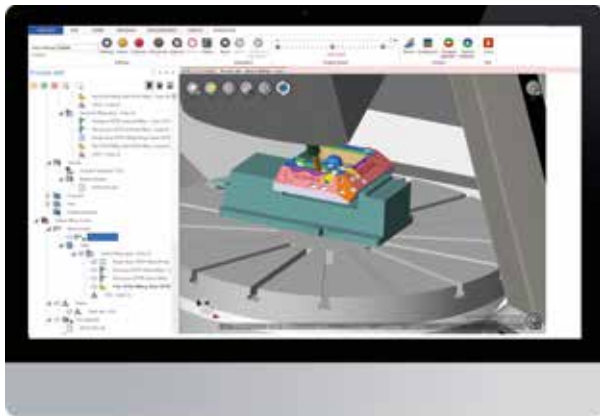
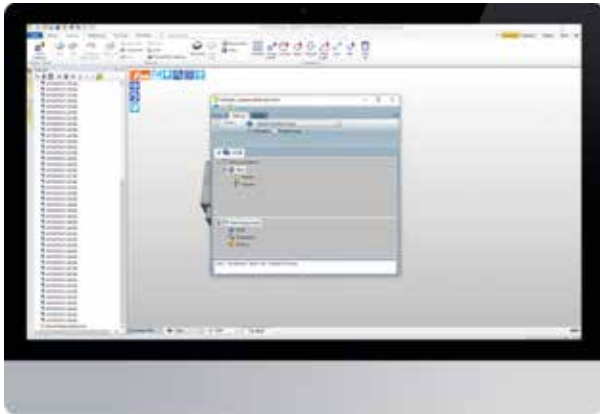
Get up to speed with the interface

EDGECAM > NCSIMUL Machine

Using the EDGECAM interface, NCSIMUL Machine integrates seamlessly to run directly within the EDGECAM environment for testing NC programs. All data will be transferred and positioned instantly on the machine.

Discover more at ncsimul.com





NCSIMUL Machine checks NC milling, drilling, turning, mill/turning and machining robot operations created in EDGE CAM, detecting any errors and eliminating the time-consuming process of manual debugging. The software also optimises your NC programs to generate more efficient, cost-effective toolpaths, improve surface finish and lengthen the working life of your cutting tools.

NCSIMUL Machine checks multi-axis operations and supports ISO code generated by EDGE CAM. The EDGE CAM and NCSIMUL Machine operate separately, enabling you to create and edit a toolpath while at the same time proving or optimising another NC program. Further substantial time-savings can be achieved by resuming a simulation on any line in the program after correcting the program in EDGE CAM.

The following will be transferred:

- NC Program
- NC Program Origins
- Milling and Turning Tool Parameters
- CAD File of Rough Stock, Clamps and Reference Part in Machine Orientation