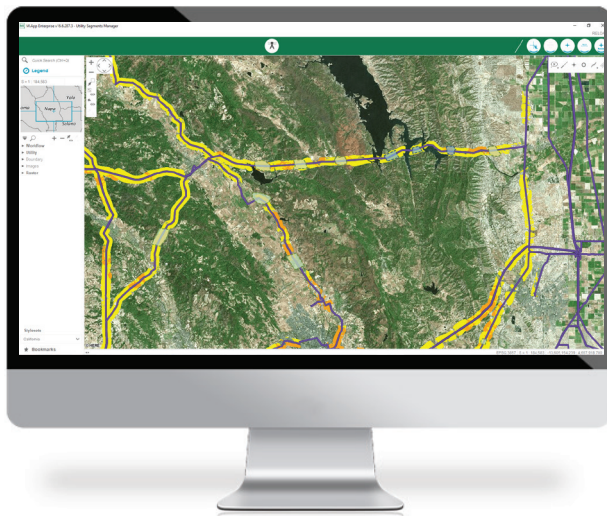


Smart Monitoring of Fire Risks

Uncontrolled fires can endanger lives and destroy property and assets. What if you could determine the likelihood of a fire and take action to help prevent it? In the context of an electric utility network, continuous monitoring of fire risk can facilitate proactive management measures to ensure the integrity of the power supply, so crucial to supporting the livelihoods of citizens and operating economies.

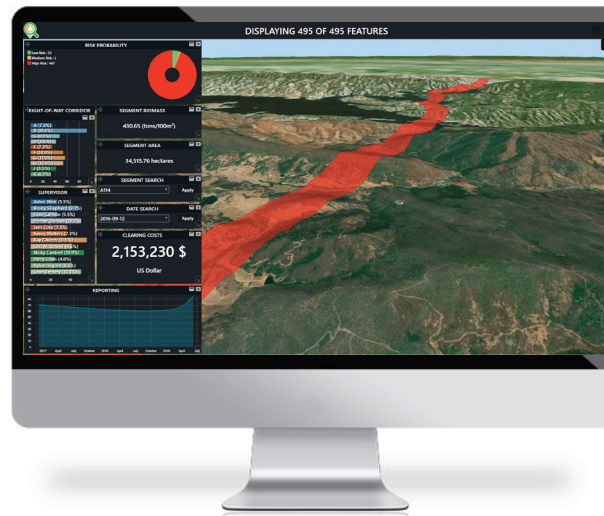
Hexagon's smart monitoring solution of fire risk identifies areas of high fire probability by using satellite imagery to extract vegetation and moisture content data and combine it with meteorological data. Results are delivered to desktop or mobile devices for strategists to access in the office or in the field so they can categorize risks to people and assets and make insightful decisions to proactively protect them.



IDENTIFY HIGH FIRE PROBABILITY AREAS

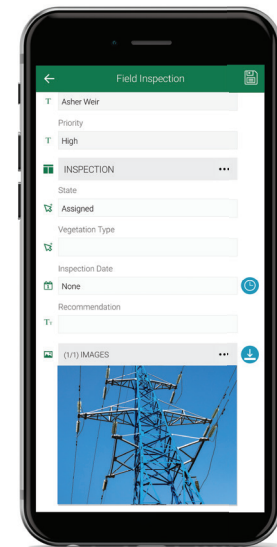
Our algorithm calculates the fire probability of your area based upon:

- Weather and climate data
- Satellite imagery
- Topography
- Proximity



MONITOR VEGETATION CONDITION CHANGE

User-friendly fire probability dashboard for continuous fire risk assessment with real-time updates, interactive charts, and maps in 2D and 3D.



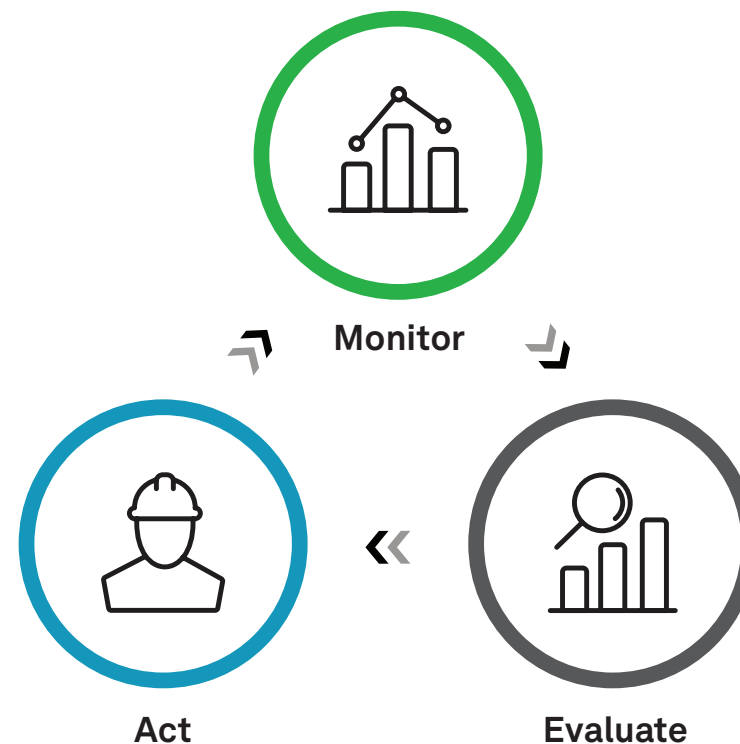
INTEGRATE WORKFLOWS FOR VEGETATION MANAGEMENT

Manage your field crew and let them access the platform from anywhere with the mobile application, even in areas without internet access.

GEO Data Design, a partner from Hexagon's Geospatial division, leveraged decades of experience in satellite data, geospatial technologies, and solution building to develop the comprehensive Prometeo algorithm. Built and deployed on Hexagon's technology, Prometeo is a satellite-based vegetation fire probability analysis solution that incorporates meteorological data and multi-spectral satellite images. The algorithm produces rich risk information, enabling organizations to prioritize the management of high-fire-risk vegetation.

Hexagon's smart monitoring solution of fire risk is built on M.App Enterprise, a cloud platform for creating geospatial apps for your organization. M.App Enterprise engages the “**Monitor - Evaluate - Act**” paradigm. The platform allows you to easily monitor real-world changes, evaluate the impact, and act on the results. With M.App Enterprise, you can access Smart M.Apps on any device for real-time answers.

Smart Monitoring of Fire Risk is offered as a managed (SaaS) service available anywhere, at any time, and on any device. All we need to get started is your network size and desired update interval.



To learn more about M.App Enterprise, visit:

<http://www.hexagongeospatial.com/products/mapp-portfolio/mapp-enterprise>

Hexagon is a global leader in sensor, software, and autonomous solutions. We are putting data to work to boost efficiency, productivity, and quality across industrial, manufacturing, infrastructure, safety, and mobility applications. Our technologies are shaping urban and production ecosystems to become increasingly connected and autonomous — ensuring a scalable, sustainable future. Hexagon's Geospatial division creates solutions that deliver a 5D smart digital reality with insight into what was, what is, what could be, what should be, and ultimately, what will be. Hexagon (Nasdaq Stockholm: HEXA B) has approximately 21,000 employees in 50 countries and net sales of approximately 4.4bn USD. Learn more at hexagon.com and follow us [@HexagonAB](https://twitter.com/HexagonAB).

GEO Data Design specialises in several market sectors, providing risk assessment and mitigation with pre-planning models to businesses, governments and corporations, designed to (I) mitigate risk, (II) manage risk and (III) implement preventative risk strategies to save people & money, protect the environment and secure infrastructure by monitoring and planning risk strategies.