



**HEXAGON**

Product description

---

# **ERDAS APOLLO 2023**

Product description

12 September 2023

# Contents

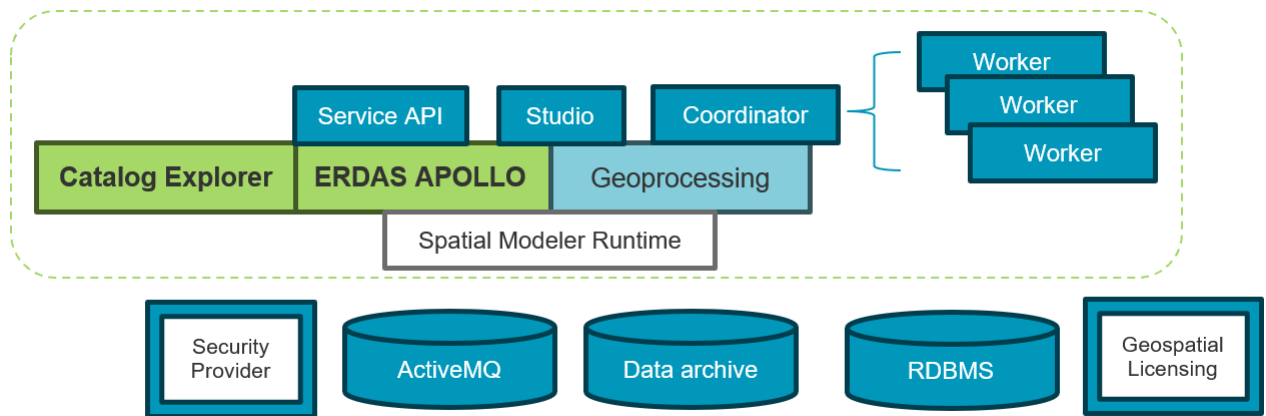
<b>Introduction .....</b>	<b>3</b>
<b>License tiers .....</b>	<b>4</b>
<b>ERDAS APOLLO Essentials .....</b>	<b>4</b>
<b>ERDAS APOLLO Advantage .....</b>	<b>4</b>
<b>ERDAS APOLLO Professional .....</b>	<b>4</b>
<b>Feature availability .....</b>	<b>5</b>
Installation packages .....	6
<b>Catalog Explorer — integrated web client .....</b>	<b>9</b>
<b>About Hexagon .....</b>	<b>10</b>

# Introduction

ERDAS APOLLO provides a comprehensive data management server solution that helps identify, locate, secure and organize your geospatial and related business data into a searchable, secured repository while enabling simple distribution through interoperable web services.

ERDAS APOLLO also alleviates pressures associated with optimizing spatial data archive storage requirements through the use of Hexagon’s industry-leading ECW image compression and HSPC point cloud storage technology. Wherever possible, ERDAS APOLLO aims to read data as-is with no conversion based on other best of breed industry format standards.

ERDAS APOLLO 2023 includes a substantial rearchitecture of the product to integrate and standardize on Hexagon’s LuciadFusion platform. This release substantially enhances previous capabilities as well as simplifies deployment, administration and other workflows. Feature availability has also changed, for further details please refer to the ERDAS APOLLO [release guide](#) or contact you local Hexagon representative.



## License tiers

### **ERDAS APOLLO Essentials**

Essentials is the perfect solution for organizations that require an enterprise solution to make sense of their traditional spatial data archive. Building on ERDAS APOLLO Essentials' history of rapid imagery services, beginning with 2023, the Essentials tier will service an expanded target market covering all traditional spatial data types with a robust catalog and security model with matching web service delivery options. The expanded ERDAS APOLLO Studio Web Administrator is now available across all tiers, enabling rapid administration and control. Essentials is an ideal starter solution for customers seeking a catalog with distribution capabilities for traditional 2D raster or vector data sources.

### **ERDAS APOLLO Advantage**

Advantage takes things to the third dimension by adding point clouds, 3D meshes and BIM/CAD data types to the catalog model. It also expands support from the traditional file-based data types to cover spatial data residing in databases such as Microsoft SQL Server, PostgreSQL and Oracle, among others. Defense industry users also gain support for VPF, MGCP and other defense-aligned formats and visualization standards. Additionally, 360-degree panoramic imagery is now supported from E57 or Hexagon's Leica Pegasus sensors. All these data types inherit the foundational workflow and security model introduced with ERDAS APOLLO Essentials. These data formats are discovered seamlessly through automatic data crawlers to locate, insert and extract metadata.

### **ERDAS APOLLO Professional**

Professional provides a powerful server-side geoprocessing solution for geospatial data, employing complex algorithms that underpin the engine within ERDAS IMAGINE or GeoMedia. Geospatial analysts create custom models using these desktop expert tools and publish them to the Geoprocessing Server to enable execution on demand by other users. As of v2023, the Data Extraction Service builds on the Geoprocessing execution model to provide expanded capabilities, no longer limited to just the raster domain.

## Feature availability

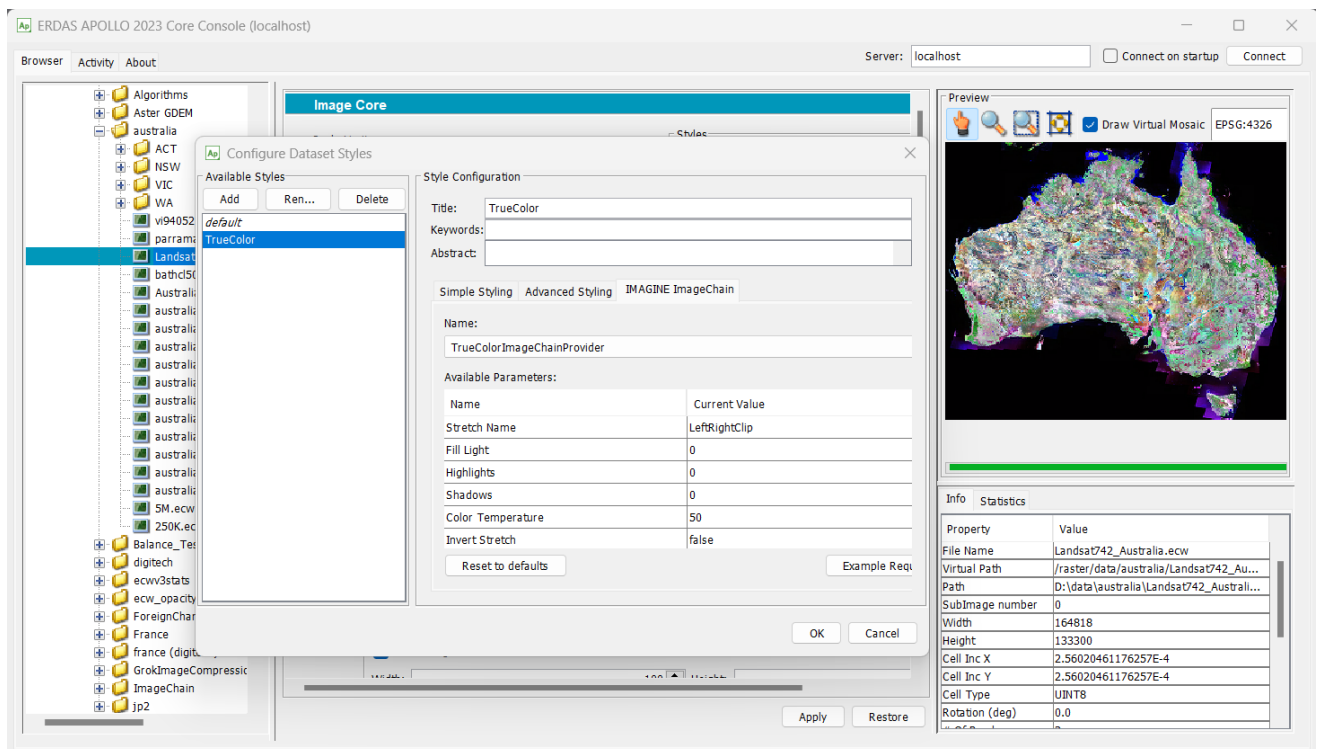
ERDAS APOLLO License tier	V2023
Professional	Geoprocessing Data Extraction Service (DES) <b>NEW</b> Maritime Standards <b>NEW</b> Aviation Standards <b>NEW</b>
Advantage	Point cloud catalog and visualization <b>NEW</b> Panoramic imagery <b>NEW</b> 3D Mesh <b>NEW</b> BIM <b>NEW</b> Defense Standards and Symbology <b>NEW</b> CAD Vector database OGC 3DTile <b>NEW</b> HSPC <b>NEW</b> LTS <b>NEW</b> Download Service <b>NEW</b>
Essentials	Catalog Vector Raster Security AOI Notification Catalog Explorer Web administration Metadata parsers and Editor Raster and Vector Style Creator <b>NEW</b> OGC WMS, WCS, WMTS, WFS(T), GML and KML ECWP OGC API Records <b>NEW</b> REST API

## Installation packages

ERDAS APOLLO is available in two installation packages.

<b>ERDAS APOLLO<sup>1</sup></b>	<b>ERDAS APOLLO Core<sup>2</sup></b>
The complete package including all components and features	Streamlined installer focused on advanced imagery delivery only
Installer remains Windows only	Windows and Linux versions are supported

For new customers, the ERDAS APOLLO suite installer is recommended for all functional capabilities unless they have very specific raster delivery needs. ERDAS APOLLO Core is no longer included in the main ERDAS APOLLO package to simplify architecture through various technology integration work completed in v2023.



Configure raster data within the ERDAS APOLLO Core Console.

<sup>1</sup> Previously known as ERDAS APOLLO Advantage/Professional


<sup>2</sup> Previously known as ERDAS APOLLO Essentials / Image Web Server

ERDAS APOLLO® Studio

DATA STYLES PRODUCTS SERVICES JOBS NOTIFICATION ANALYTICS GEOPROCESSING SETTINGS admin Help

FOLDER BROWSER

DETAILS



Select some data in the table.

UPLOAD
ADD DATA

Search by keywords... Any Enter start date Enter end date SEARCH

CREATE PRODUCT
ADD TO PRODUCT
CREATE SERVICE
REMOVE DATA

TITLE	PATH	FORMAT	DATE CREATED
U 7245054950 20 2200 col 2001	C:\Data\9_SID_Images\U_7245054950_20_2200_col_2001.sid	IMAGINE/MrSID...	5/8/2023 3:49 PM
U 7245054875 20 2200 col 2001	C:\Data\9_SID_Images\U_7245054875_20_2200_col_2001.sid	IMAGINE/MrSID...	5/8/2023 3:49 PM
U 7245054800 20 2200 col 2001	C:\Data\9_SID_Images\U_7245054800_20_2200_col_2001.sid	IMAGINE/MrSID...	5/8/2023 3:49 PM
U 7237554950 20 2200 col 2001	C:\Data\9_SID_Images\U_7237554950_20_2200_col_2001.sid	IMAGINE/MrSID...	5/8/2023 3:49 PM
U 7237554875 20 2200 col 2001	C:\Data\9_SID_Images\U_7237554875_20_2200_col_2001.sid	IMAGINE/MrSID...	5/8/2023 3:49 PM
U 7237554800 20 2200 col 2001	C:\Data\9_SID_Images\U_7237554800_20_2200_col_2001.sid	IMAGINE/MrSID...	5/8/2023 3:49 PM
U 7230054950 20 2200 col 2001	C:\Data\9_SID_Images\U_7230054950_20_2200_col_2001.sid	IMAGINE/MrSID...	5/8/2023 3:49 PM
U 7230054875 20 2200 col 2001	C:\Data\9_SID_Images\U_7230054875_20_2200_col_2001.sid	IMAGINE/MrSID...	5/8/2023 3:49 PM
U 7230054800 20 2200 col 2001	C:\Data\9_SID_Images\U_7230054800_20_2200_col_2001.sid	IMAGINE/MrSID...	5/8/2023 3:49 PM
9_SID_Images	C:\Data\9_SID_Images	folder	5/8/2023 3:49 PM
SID Image		folder	5/8/2023 3:07 PM

Multi-select with Shift-click or Ctrl-click

Or configure all datatypes within the ERDAS APOLLO Studio web administrator.

Starting with v2023, a separate Data Pack with an assortment of sample data across New York City and Melbourne, Australia is now available to help onboard new customers and demonstrate key workflows. Data includes vector, raster, panoramic, 3D tiles and point cloud data types collected from Hexagon sensor solutions.



Example NYC 3D sample dataset delivered via ERDAS APOLLO 2023

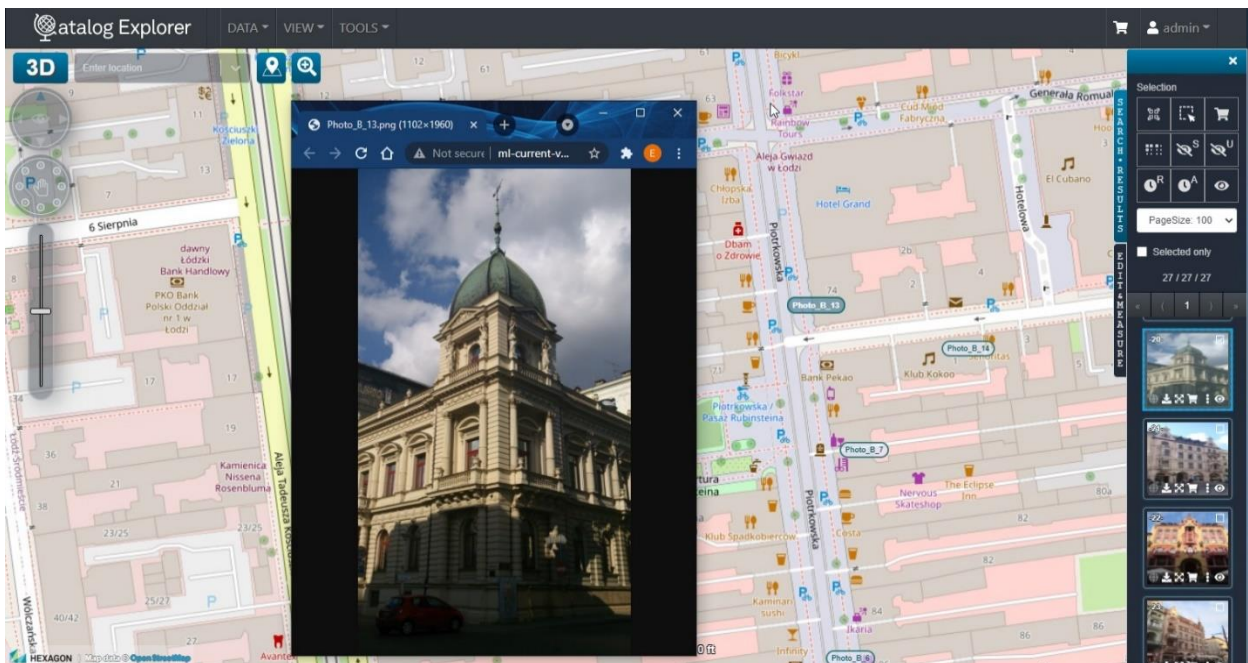


## Catalog Explorer — integrated web client

Catalog Explorer is a configurable browser-based web portal that can be used for locating, viewing, querying, and analyzing geospatial data published by Hexagon products and/or other standard web services. Using modern services-oriented and RESTful architectures, you can connect to many data sources at the same time.

Catalog Explorer integrates multiple data sources into a single map view, providing easy navigation and interaction.

The Catalog Explorer web client experience builds around the catalog search to provide other features such as a gazetteer, robust OGC API Web Service support, and integration of the ERDAS APOLLO Geoprocessing Server capability.



Catalog Explorer can be used to connect to ERDAS APOLLO to browse and search the catalog, consume and view data and services, download and clip datasets, and create value-added data products on-demand.

Catalog Explorer is used to connect to ERDAS APOLLO Essentials, Advantage, and Professional for operations including consuming services, browsing and searching the catalog, downloading datasets, and server-side geoprocessing (Professional version only).



All other trademarks or service marks used herein are property of their respective owners.

## About Hexagon

Hexagon is the global leader in digital reality solutions, combining sensor, software and autonomous technologies. We are putting data to work to boost efficiency, productivity, quality and safety across industrial, manufacturing, infrastructure, public sector, and mobility applications.

Our technologies are shaping production and people-related ecosystems to become increasingly connected and autonomous – ensuring a scalable, sustainable future.

Hexagon's Safety, Infrastructure & Geospatial division improves the resilience and sustainability of the world's critical services and infrastructure. Our solutions turn complex data about people, places and assets into meaningful information and capabilities for better, faster decision-making in public safety, utilities, defense, transportation and government.

Hexagon (Nasdaq Stockholm: HEXA B) has approximately 24,000 employees in 50 countries and net sales of approximately 5.2bn EUR. Learn more at [hexagon.com](https://hexagon.com) and follow us [@HexagonAB](https://twitter.com/HexagonAB).