



## RISHABH ENGINEERING, INDIA

### Key Facts

**Company:** Rishabh Engineering,  
a division of Rishabh Software

**Website:** [www.rishabheng.com](http://www.rishabheng.com)

**Industry:** Oil & Gas - Onshore

**Country:** India

### Products Used:

- CADWorx® Plant Professional

### Key Benefits:

- Reduced man hours
- Improved accuracy
- Ensured client satisfaction
- Generated comprehensive isometric drawings
- Took advantage of administration aspects like spec editing, project creation, customization, and I-Configure™, which were quick and adaptable
- Able to quickly learn and adapt the software for users with AutoCAD® backgrounds

### RISHABH ENGINEERING COMPLETES OKLAHOMA OIL STORAGE PROJECT WITH CADWORX®, IMPROVING ACCURACY AND SAVING TIME

Headquartered in Beside Sigil, India, Rishabh Engineering provides multi-disciplinary engineering services to global engineering, procurement, and construction (EPC) leaders, detailed engineering contractors, original equipment manufacturers (OEMs), fabricators, and surveying companies. Clients are involved in the oil and gas, chemical, petrochemical, power, water, wastewater, and utility industries.

### CREATING 3D MODEL WITH MINIMAL INPUT

A privately held U.S.-based EPC firm specializing in the engineering and construction of heavy industrial facilities and pipelines appointed Rishabh Engineering to develop a 3D model for a brownfield expansion project of a storage tank facility in Oklahoma, U.S., with a capacity of 360,000 bpd. The project included four storage tanks, two booster pumps, two charge pumps, three mainline pumps, a launcher and receiver, metering and prover skids, sump tank, transformer, and MCC building. Piping totaled 3,262 feet with diameters of ½” to 24” comprising 80 lines.

The team did not receive a site or equipment layout. They had to start routing the pipe from civil survey points to develop the 3D model. The site also had an uneven ground surface, adding another challenge for piping routes.

CADWorx offered a lower cost compared to other available plant design tools and was very easy to use. CADWorx allowed Rishabh Engineering to create user shapes customized for the project, and the Generic Attach command enabled the team to attach intelligent information to components imported from other software.

“CADWorx allowed designers to add electrical trays, junction boxes, and structural and piping models without changing any utility tool, saving a considerable amount of time,” explained Arpit Gupta, manager of business acquisitions at Rishabh Engineering.



The Isogen® feature in CADWorx provided accurate and detailed isometric drawings while reducing project time by 5%.

“The project required 2,000 man-hours, yet we delivered the final 3D model in 2 ½ months with a team of just five members,” Gupta added.

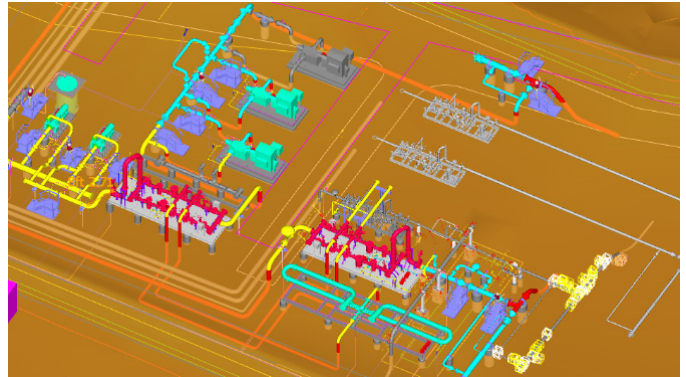
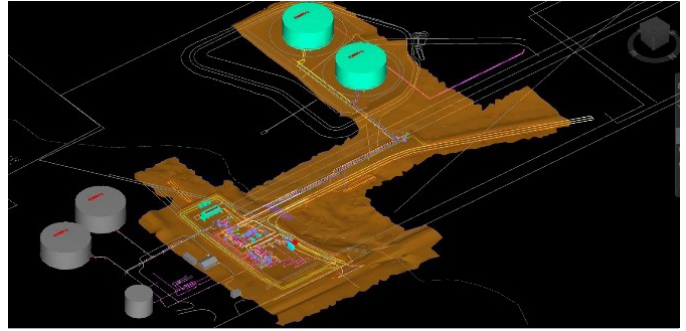
## IMPROVING PRODUCTIVITY AND ACCURACY WITH CADWORX

The 3D enhanced feature in CADWorx replicates actual component shapes of the components which helps to accurately check and resolve clashing in smaller piping. The spec editing, project creation, customization, and I-Configure tools proved quick and adaptable. It was easy to learn, thus reducing overall training time by 20%.

Rishabh Engineering delivered the intelligent 3D model with GA, isometric drawings, bills of material, and other deliverables which reduced the overall cost of the project. Team members learned quickly, and they increased accuracy while ensuring client satisfaction.

## AWARD-WINNING PROJECT

Rishabh Engineering received the 2017 CADWorx Drivers of Success Runner-up Award for its use of the software. The annual Drivers of Success competition recognizes innovative applications of Hexagon PPM products, impressive project results, and significant benefits from collaboration among disciplines and the integration of the products.



## ABOUT HEXAGON

Hexagon is a global leader in digital solutions that create Autonomous Connected Ecosystems (ACE). Our industry-specific solutions create smart digital realities that improve productivity and quality across manufacturing, infrastructure, safety and mobility applications.

Hexagon's PPM division empowers its clients to transform unstructured information into a smart digital asset to visualize, build and manage structures and facilities of all complexities, ensuring safe and efficient operation throughout the entire lifecycle.

Hexagon (Nasdaq Stockholm: HEXA B) has approximately 20,000 employees in 50 countries and net sales of approximately 3.8bn EUR. Learn more at [hexagon.com](http://hexagon.com) and follow us @HexagonAB.